

Alpine Canada Alpine National Officials Program Level II Certification



ALPINE CANADA

November 1st, 2017

INTRODUCTIONS

NAME:

CLUB:

INVOLVEMENT IN RACING:

- Racer, Official, Parent etc.?

WHY THE LEVEL II OFFICIALS COURSE:

EXPECTATIONS OF THE COURSE:



AGENDA

- INTRODUCTION - 30 min
- RACE ORGANIZATION - 30 min
- RACE SECRETARIAT - 30 min
- JURY DETAIL - 30 min
- RULES - 30 min
- COURSES & RULES - 60 min
- SECURITY & RACE COURSE - 90 min
- GATE JUDGE - 15 min
- TIMING - 30 min
- POINTS, PENALTY & RESULTS - 30 min
- ADDENDUM - 15 min
- EXAM & REVIEW - 75 min



OBJECTIVES

- To prepare participants to assume leadership roles within alpine and para-alpine race structures.
- Understanding of race organization
 - Race organization officials – roles and responsibilities
 - Race structure – Administration, Start, Course, Finish, Timing, Results
 - Race protocols :
 - entries, team captains' meeting, draw, course inspection, race jury / ROC, protests, jury meeting, timing, results, points





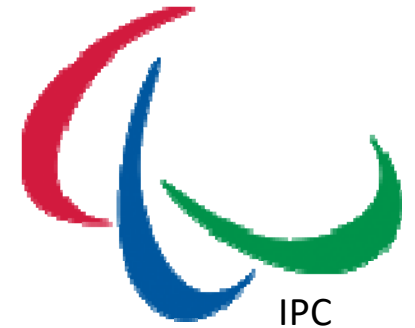
Overview

- Sanctioning Bodies
- Competitive Racing Levels
- Officials' Program

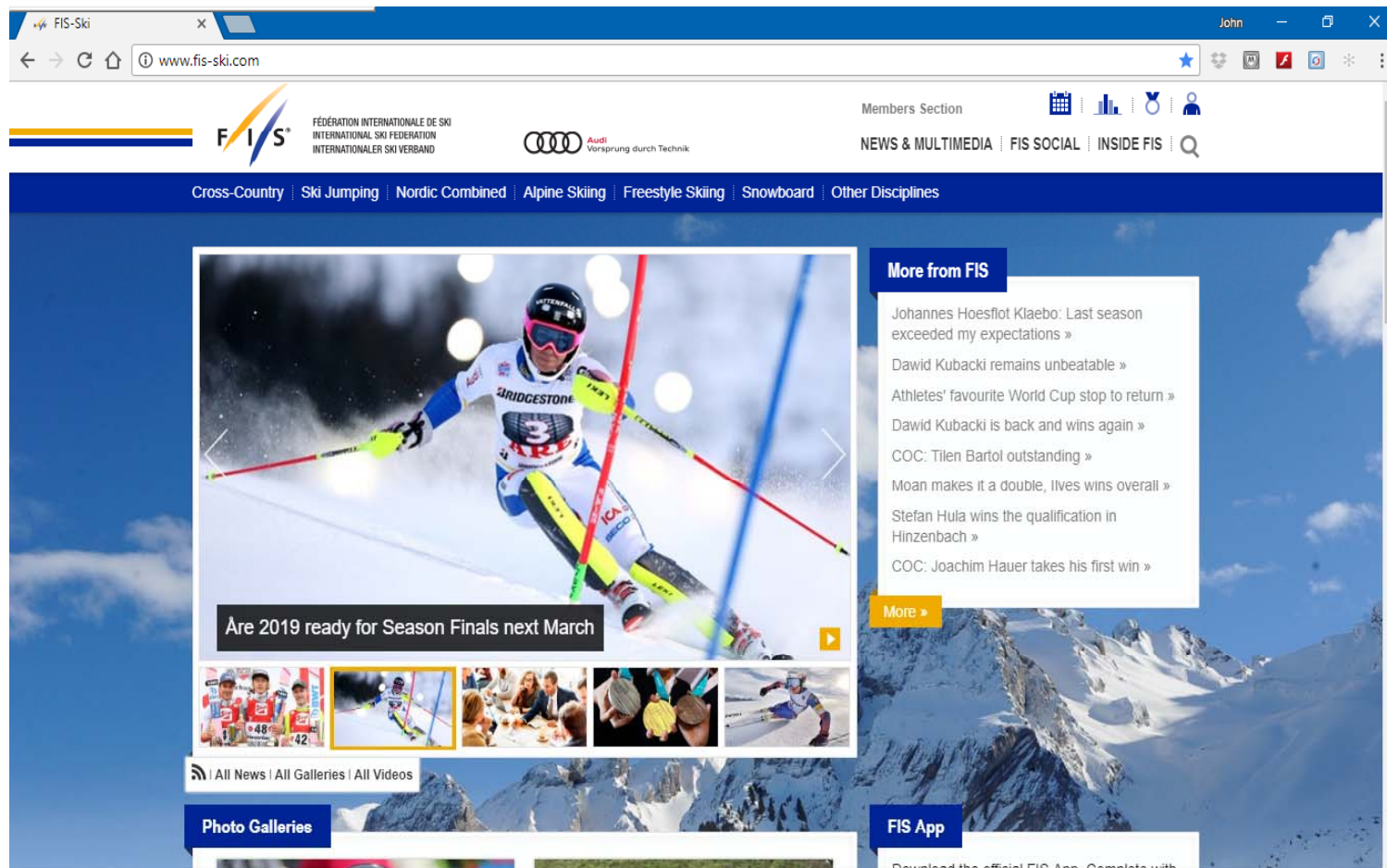


World Sport Organization

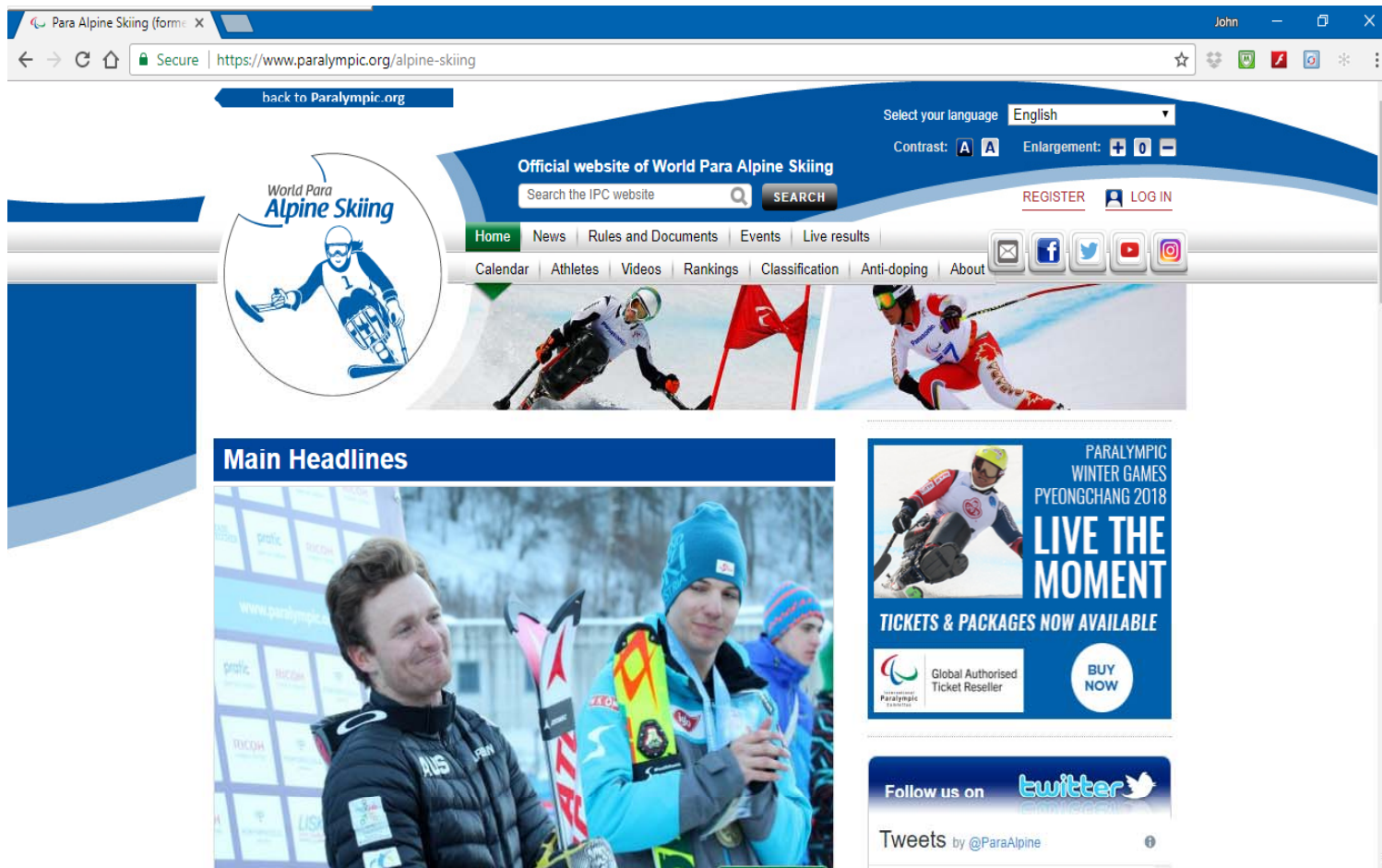
- World governing body
- Rules, standards, sanctions, penalties
- World Cup
- World Championships
- Continental Cups
- Olympic Winter Games with/for IOC



www.fis-ski.com



www.paralympic.org/alpine-skiing

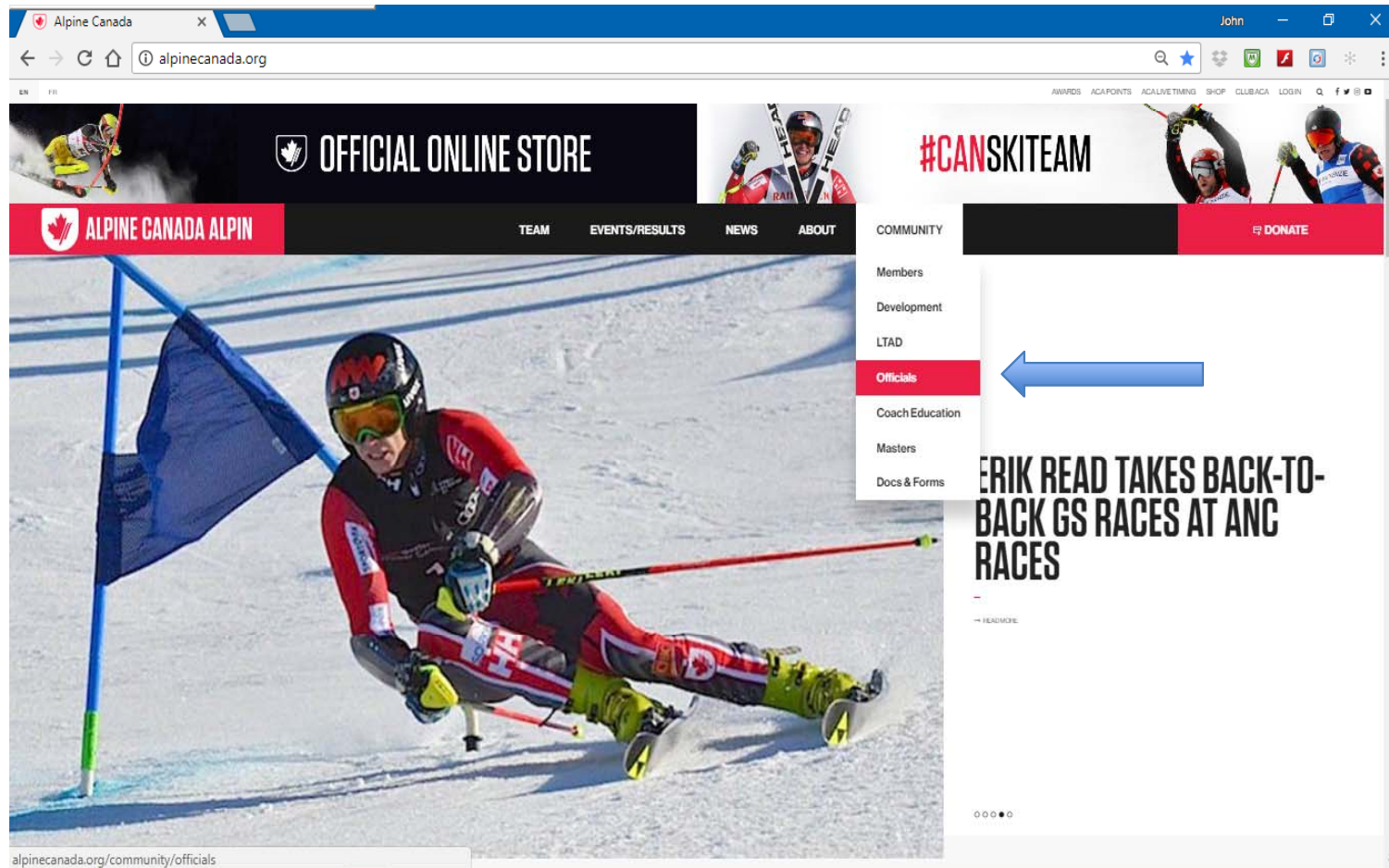


NSO

- National Sports Organization - ACA
- National governing body
 - Alpine, Para-alpine, Ski/Snowboard Cross (in partnership with Snowboard Canada)
- National Ski Teams
- National Championships
- Rules, standards, sanctions, penalties (FIS compliant and ACA)
- Leadership for sport development at national level (racing, coaching, officiating)



www.alpinecanada.org



Divisions / Zones

- Local governing body
- Local Teams
- Rules and Standards, sanctions, penalties (FIS, ACA and PSO compliant)
- Leadership for sport development at local level (racing, coaching, officiating)



Racing Levels

- Non-Points Races

- All age groups, calendared by divisions with PSO
 - Club specific 'house-league' and 'fun-n-glory' programs usually are not under PSO sanction

- National Points Races

- U14 and older, calendared at ACA by PSO
- Competitive stream to qualify for provincial and national championships

- FIS Races

- U18 and older, calendared FIS by ACA
- Competitive stream to qualify for provincial and national teams that compete at the Continental Cup and World Cup circuits



Officials Program

- Supporting the athlete's race program
- Risk Management (security) first
- Fairness Always
- Reliable Race Results



Officials Program

- 4 Levels of Officials
- Parallel development - Race Administration, Timing/Results, Race Operations, Course, Jury
- 4 levels of Technical Delegates



Officials Program

- Classroom study and examination



- Approved Course Conductors
- Approved TD Examiners



Officials Job Categories

Administration	Event Quality	Course	Timing	Jury
Race Organizing Committee Race Chair Chief of Administration		Chief of Race (also Jury Member) Chief of Course Chief of Gate Judges Gate Judge	Chief of Timing and Calculations Chief of timing Timer Starter	Technical Delegate TD Candidate Referee
Secretariat Finance Accommodation Scoreboard	Chief of Event Quality Chief of Ski Area Relations Chief of Awards and Media Relations	Chief of Equipment Chief Steward Steward	Calculator Recorder Finish Controller Assistant Starter	





Race Organization

- Objectives
- Race Organization
- ROC Objectives
- Race Structure

Objectives

Ensures:

- Fastest racer to ski the course correctly wins.
- Consistent, secure course from start to finish, first forerunner to last racer.
- Accurate timing.



Race Organization

Race Chairman	Directs all <u>non-technical</u> committees from organization to completion of race.
Chief of Race	Responsible for all <u>technical</u> and security aspects of the race. Chairs the team Captain's meeting
Chief of Administration	In charge of all records, the draw, registration, bibs and results production and distribution.
Chief of Course	Supervises on-the-hill arrangements such as course preparation and maintenance, course marking including flags, dyeing and numbering, course clean up and works with Course Setter.
Chief of Timekeeping and Calculation	Supervises all timing, communications and calculations, plans and sets up timing and communication systems, oversees timers, starters, calculators, recorders and spotters.
Chief of Gate Judges	Organizes, instructs and is responsible for the Gate Judges.
Chief of Equipment	Responsible for obtaining all equipment required for the preparation and operation of the race.
Chief of Stewards	Responsible for control of spectator and recreational skiers and first aid coverage.
Chief of Event Quality	Responsible for coordinating the race with the Ski Area, arranging the awards and media promotion and relations.



Officials and more Officials

- Race Chairman
- Chief of Race
- Chief of Administration
- Chief of Course
- Chief of Gate Judges
- Chief of Timing & Calculations
- Technical Delegate
- Referee & Assistant Referee
- Start Referee
- Finish Referee
- Starter
- Assistant Starter
- Gate Judges
- Course Crew
- Electronic Timing Operators & Recorders
- Hand Timers & Recorders
- Runners
- Results Posters
- Course Setters



ROC Objectives

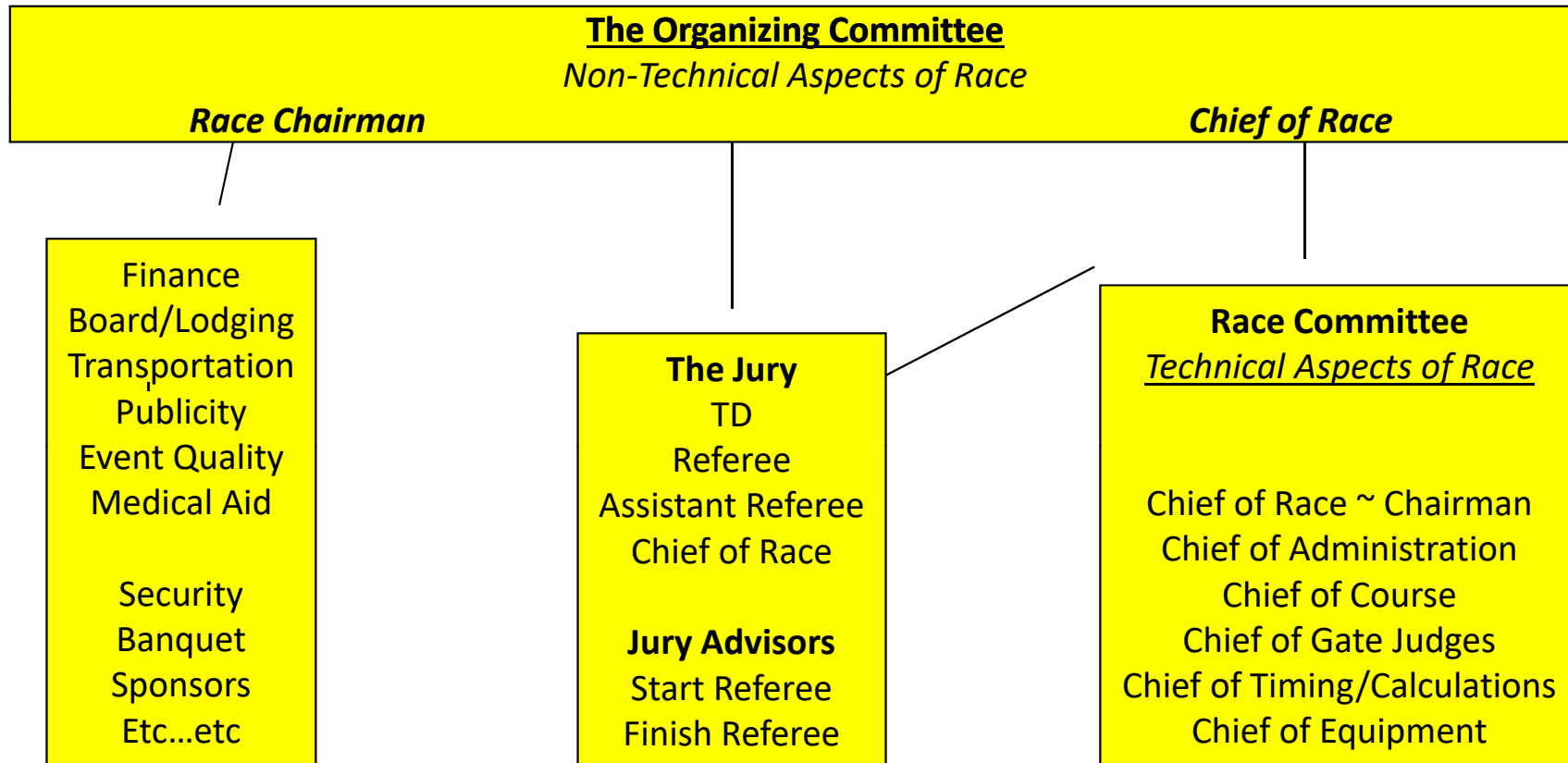
Courses	Are secure, legal, fair, consistent
Competitors	Are qualified, properly seeded, informed, guided, controlled
Timing	Is accurate, consistent throughout the race
Results	Are accurate, prompt, available
Documentation	Is accurate, complete and timely
The Race	Is safe, fair, fun, appropriated scheduled, timely
Procedures	Are consistent and uniform

There should be no individual advantages other than skiing smarts and physical performance.

Each competitor should have the opportunity for one - and only one - run on a proper, fair and consistent course.



Race Structure



Race Synopsis

Off Hill Activities

Planning
Publicity
Race Notice
Entries
Team Captain's Meeting
 Info Distribution, Jury Selection, Draw, 1st Run Start List
Bib Distribution

On Hill Activities

Before The Race

Course Preparations
Check Communications
Set 1st course
Final Hill Preparations
Timing Installations & checks

During The Race

1st Run Results
Start List for 2nd run

Ski Patrol, Stewards, Gate Judges, Timing
Personnel, Post/Announce DSQ's, Jury
Decisions, Tear Down/Clean Up

After the Race

Results
Review or Recap



Checklist

- ✓ *Early fall*
- ✓ *Four weeks prior to race*
- ✓ *Two weeks prior to race*
- ✓ *One week prior to race*
- ✓ *The day prior to race*
- ✓ *Evening before race*
- ✓ *Race day*
- ✓ *Key elements on race day*





Race Secretariat

- Chief of Administration (Race Administrator / RA)
- RA Forms
- Team Captains' Meeting
 - Entries, Draw, 1st Run Start List, Snow Seed

Race Secretariat

- Secretariat checklist
- List of supplies
- Race Notice
- Race entry form
- Team Captain's meeting ~ checklist
- Draw Board
- Results



Chief of Administration



R A Forms

[illegible][illegible]

R A Forms



PROGRAM / PROGRAMME / PROGRAMM WC Alpine Technical L ☐ M ☐

Date / Date / Datum	Site / Lieu / Ort	Country / Pays / Land	Event (SL / GS)
Name of event / Nom de l'événement / Name der Veranstaltung			
Place of jury inspection / lieu d'inspection du jury / Ort der Besichtigung Jury		Place	Time
Radios / Radios / Funkgeräte			
Liaison Coaches			
Lift open / Ouverture des remontées mécaniques / Lift öffnet			
Warmup and training area / Piste d'échauffement et d'entraînement / Aufwärm- und Trainingspiste			
Run / Manche / Lauf	1st / 1ère / 1.	2 nd / 2ème / 2.	
Course setter / Traceur / Kurssetzer			
Inspection (one) / Reconnaissance (une) / Besichtigung (eine)			
Entry for racers closed / Entrée fermée pour coureurs / Zutritt für Werkschläpfer geschlossen			
Photographers on place / Photographes en position / Fotografen am Platz			
Entry for all closed / Entrée fermée pour tous / Zutritt für alle geschlossen			
Coaches on place / Entraîneurs en position / Trainer am Platz			
POV Camera Number / Nombre / Anzahl	Start time 1st camera racer / Heure de départ caméra 1 / Startzeit Vorläufer 1		
Forerunners Number / Nombre / Anzahl	Start time 1st Forerunner / Heure de départ coureur 1 / Startzeit Vorläufer 1		
Start time racer no. 1 / Heure de départ no 1 / Startzeit Nr. 1			
Start interval / Intervalle de départ / Startintervall			
Television breaks / Televisione intermedia / TV Pause			
Slip crews / Lisseurs / Rutschkommandos			
Intermediate times / Temps intermédiaires / Zwischenzeiten			
		Place	Time
Flower ceremony / Cérém. Des fleurs / Blumenzeremonie			
Prize giving ceremony / Remise des prix / Siegerehrung			
Public draw / tirage au sort / Öffentliche Auslosung	Racers must appear		
Press conference / Conference de presse / Pressekonferenz			
Course setter next race / traceur prochaine compétition / Kurssetzer nächste			
Next team captains meeting / Prochaine séance des chefs d'équipes / Nächste Mannschaftsführersitzung			
Miscellaneous / Divers / Verschiedenes			



FÉDÉRATION INTERNATIONALE DE SKI
INTERNATIONAL SKI FEDERATION
INTERNATIONALER SKI VERBAND



PROGRAM FOR / PROGRAMME / PROGRAM WC Alpine Speed L ☐ M ☐

Date / Date / Datum	Site / Lieu / Ort	Country / Pays / Land	Event (DH / SG)
Name of event / Nom de l'événement / Name der Veranstaltung			
Place of jury inspection / lieu d'inspection du jury / Ort der Besichtigung Jury		Place	Time
Radios / Radios / Funkgeräte			
Liaison Coaches			
Lift open / Ouverture des remontées mécaniques / Lift öffnet			
Warmup and training area / Piste d'échauffement et d'entraînement / Aufwärm- und Trainingspiste			
Inspection (one) / Reconnaissance (une) / Besichtigung (eine)			
Entry for racers closed / Entrée fermée pour coureurs / Zutritt für Werkschläpfer geschlossen			
Photographers on place / Photographes en position / Fotografen am Platz			
Entry for all closed / Entrée fermée pour tous / Zutritt für alle geschlossen			
Coaches on place / Entraîneurs en position / Trainer am Platz			
POV Camera Number / Nombre / Anzahl	1st camera racer	Start time / Heure de départ / Startzeit	
Forerunners + reserve Number / Nombre / Anzahl	Forerunner interval	Start time / Heure de départ / Startzeit	
Start time racer no. 1 / Heure de départ no 1 / Startzeit Nr. 1			
Start interval / Intervalle de départ / Startintervall			
Television breaks / Televisione intermedia / TV Pause			
		Places	Back to start
Yellow zones / flags / Zones jaunes / drapeaux / Gelbe Zonen / Flaggen		1st	
		2nd	
		3rd	
Slip crews / Lisseurs / Rutschkommandos			
Intermediate times / Temps intermédiaires / Zwischenzeiten		& speed	
		Place	Time
Flower ceremony / Cérém. Des fleurs / Blumenzeremonie			
Prize giving ceremony / Remise des prix / Siegerehrung			
Public draw / tirage au sort / Öffentliche Auslosung	Racers must appear		
Press conference / Conference de presse / Pressekonferenz			
Course setter at start / Traceur au départ / Kurssetzer am Start			
Next team captains meeting / Prochaine séance des chefs d'équipes / Nächste Mannschaftsführersitzung			
Miscellaneous / Divers / Verschiedenes			



FÉDÉRATION INTERNATIONALE DE SKI
INTERNATIONAL SKI FEDERATION
INTERNATIONALER SKI VERBAND



Team Captains' Meeting



Team Captains' Meeting

- Constitute the Jury
- Confirm entries
- Confirm representation
- Confirm seeding
- Execute the draw
- Present and confirm program
- Confirm timing and location of next TCM



Start Order

- One run race event
- Two run race event
 - 1st run
 - Tie for 30th place
 - 2nd run
- Snow Seed
- Starting order for FIS races (1st & 2nd run)



Snow Seed

- Extraordinary circumstances (when snowing)
- In advance of the race the Jury may change the start order in DH, SG, GS
- 6 competitors are drawn from the last 20% of the field.
- Start before Bib #1
- In reverse order of their start number

% TABLE

# of Racers	20%	Bib Numbers	# of Racers	20%	Bib Numbers	# of Racers	20%	Bib Numbers	# of Racers	20%	Bib Numbers
30	6.0	25 - 30	63	12.6	51 - 63	96	19.2	78 - 96	129	25.8	104 - 129
31	6.2	26 - 31	64	12.8	52 - 64	97	19.4	79 - 97	130	26.0	105 - 130
32	6.4	27 - 32	65	13.0	53 - 65	98	19.6	80 - 98	131	26.2	106 - 131
33	6.6	28 - 33	66	13.2	54 - 66	99	19.8	81 - 99	132	26.4	107 - 132
34	6.8	29 - 34	67	13.4	55 - 67	100	20.0	82 - 100	133	26.6	108 - 133
35	7.0	30 - 35	68	13.6	56 - 68	101	20.2	83 - 101	134	26.8	109 - 134
36	7.2	31 - 36	69	13.8	57 - 69	102	20.4	84 - 102	135	27.0	110 - 135
37	7.4	32 - 37	70	14.0	58 - 70	103	20.6	85 - 103	136	27.2	111 - 136
38	7.6	33 - 38	71	14.2	59 - 71	104	20.8	86 - 104	137	27.4	112 - 137
39	7.8	34 - 39	72	14.4	60 - 72	105	21.0	87 - 105	138	27.6	113 - 138
40	8.0	35 - 40	73	14.6	61 - 73	106	21.2	88 - 106	139	27.8	114 - 139
41	8.3	36 - 41	74	14.8	62 - 74	107	21.4	89 - 107	140	28.0	115 - 140
42	8.4	37 - 42	75	15.0	63 - 75	108	21.6	90 - 108	141	28.2	116 - 141
43	8.6	38 - 43	76	15.2	64 - 76	109	21.8	91 - 109	142	28.4	117 - 142
44	8.8	39 - 44	77	15.4	65 - 77	110	22.0	92 - 110	143	28.6	118 - 143
45	9.0	40 - 45	78	15.6	66 - 78	111	22.2	93 - 111	144	28.8	119 - 144
46	9.2	41 - 46	79	15.8	67 - 79	112	22.4	94 - 112	145	29.0	120 - 145
47	9.4	42 - 47	80	16.0	68 - 80	113	22.6	95 - 113	146	29.2	121 - 146
48	9.6	43 - 48	81	16.2	69 - 81	114	22.8	96 - 114	147	29.4	122 - 147
49	9.8	44 - 49	82	16.4	70 - 82	115	23.0	97 - 115	148	29.6	123 - 148
50	10.0	45 - 50	83	16.6	71 - 83	116	23.2	98 - 116	149	29.8	124 - 149
51	10.2	46 - 51	84	16.8	72 - 84	117	23.4	99 - 117	150	30.0	125 - 150
52	10.4	47 - 52	85	17.0	73 - 85	118	23.6	100 - 118	151	30.2	126 - 151
53	10.6	48 - 53	86	17.2	74 - 86	119	23.8	101 - 119	152	30.4	127 - 152
54	10.8	49 - 54	87	17.4	75 - 87	120	24.0	102 - 120	153	30.6	128 - 153
55	11.0	50 - 55	88	17.6	76 - 88	121	24.2	103 - 121	154	30.8	129 - 154
56	11.2	51 - 56	89	17.8	77 - 89	122	24.4	104 - 122	155	31.0	130 - 155
57	11.4	52 - 57	90	18.0	78 - 90	123	24.6	105 - 123	156	31.2	131 - 156
58	11.6	53 - 58	91	18.2	79 - 91	124	24.8	106 - 124	157	31.4	132 - 157
59	11.8	54 - 59	92	18.4	80 - 92	125	25.0	107 - 125	158	31.6	133 - 158
60	12.0	55 - 60	93	18.6	81 - 93	126	25.2	108 - 126	159	31.8	134 - 159
61	12.2	56 - 61	94	18.8	82 - 94	127	25.4	109 - 127	160	32.0	135 - 160
62	12.4	57 - 62	95	19.0	83 - 95	128	25.6	110 - 128	161	32.2	136 - 161

ICR - 602.1.9

In extraordinary conditions, the Jury may change the starting order of a Downhill race, a Giant Slalom or a Super G (when snowing, etc.). A group of at least 6 competitors, nominated in advance, start before start number 1. These 6 competitors are drawn from among the last 20% of the start list. They will start in reverse order of their start numbers.

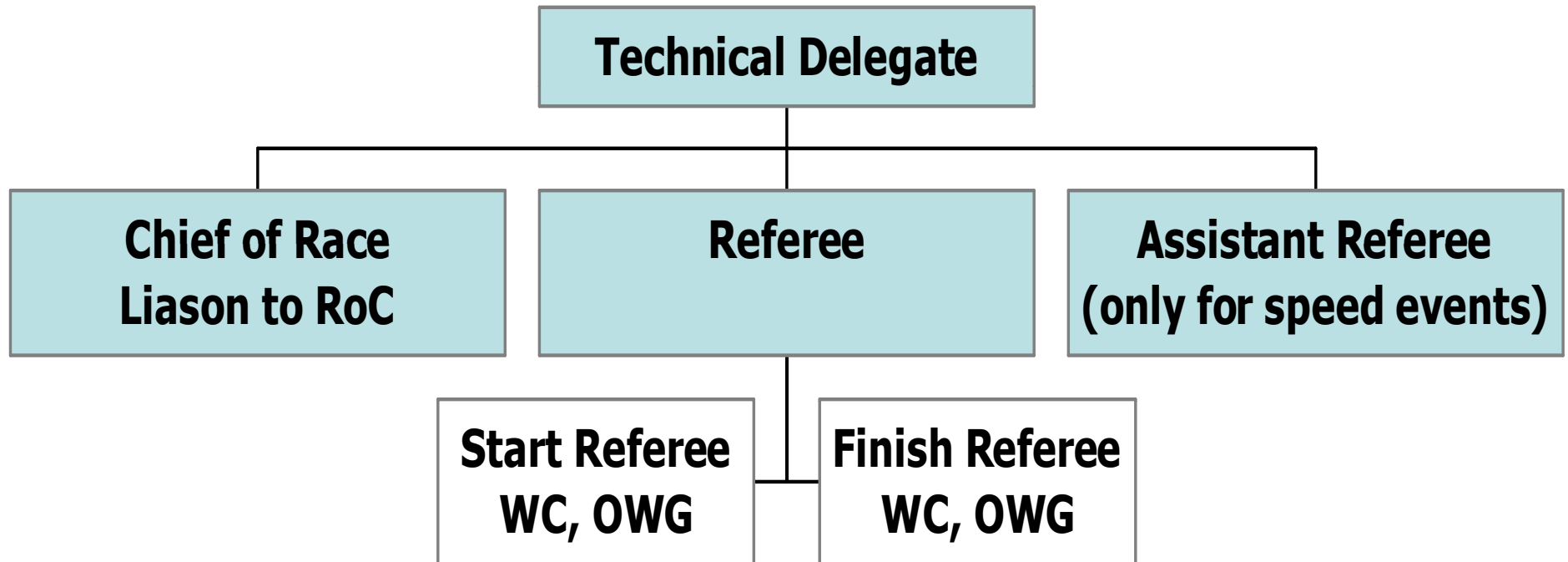




Jury Detail

- Overview
- Responsibilities
- The Technical Delegate
- Re-runs, Sanctions, Disqualifications, Protests

Race Jury – ICR 601.4



Race Jury – 601.4.6

Duty:

While each member of the jury has some specific responsibilities (TD - ICR 604.9, Referee - 604.10), the **voting jury members** are jointly and equally responsible/accountable for the decisions the jury makes.

Guiding principles for decision making include:

- **compliance** with the rules of racing,
- the **security** of the athletes / participants, and
- the delivering the **fairest** competition environment for the circumstances at the time (variables: weather, time, resources, equipment, etc.).
- consistent application of *due process* and *hard evidence* protocols to resolve protests.



Race Jury

- Voting members & their appointment
- “Jury Advisors” and “Eyes of the Jury”
- Non-Points Races
 - All age groups, calendared by divisions with PSO
 - Club specific ‘house-league’ and ‘fun-n-glory’ programs usually are not under PSO sanction
- National Points Races
 - U14 and older, calendared at ACA by PSO
 - Competitive stream to qualify for provincial and national championships
- FIS Races
 - U18 and older, calendared FIS by ACA
 - Competitive stream to qualify for provincial and national teams that compete at the Continental Cup and World Cup circuits



Jury Responsibilities

- Rules
- Security
- General responsibilities
 - Technical Delegate
 - Chairing the Jury
 - Referee & Assistant Referee
 - Start Referee, Finish Referee, Course Setter
 - Chief of Race
 - Operations



Technical Delegate – ICR 602, 601.4.9

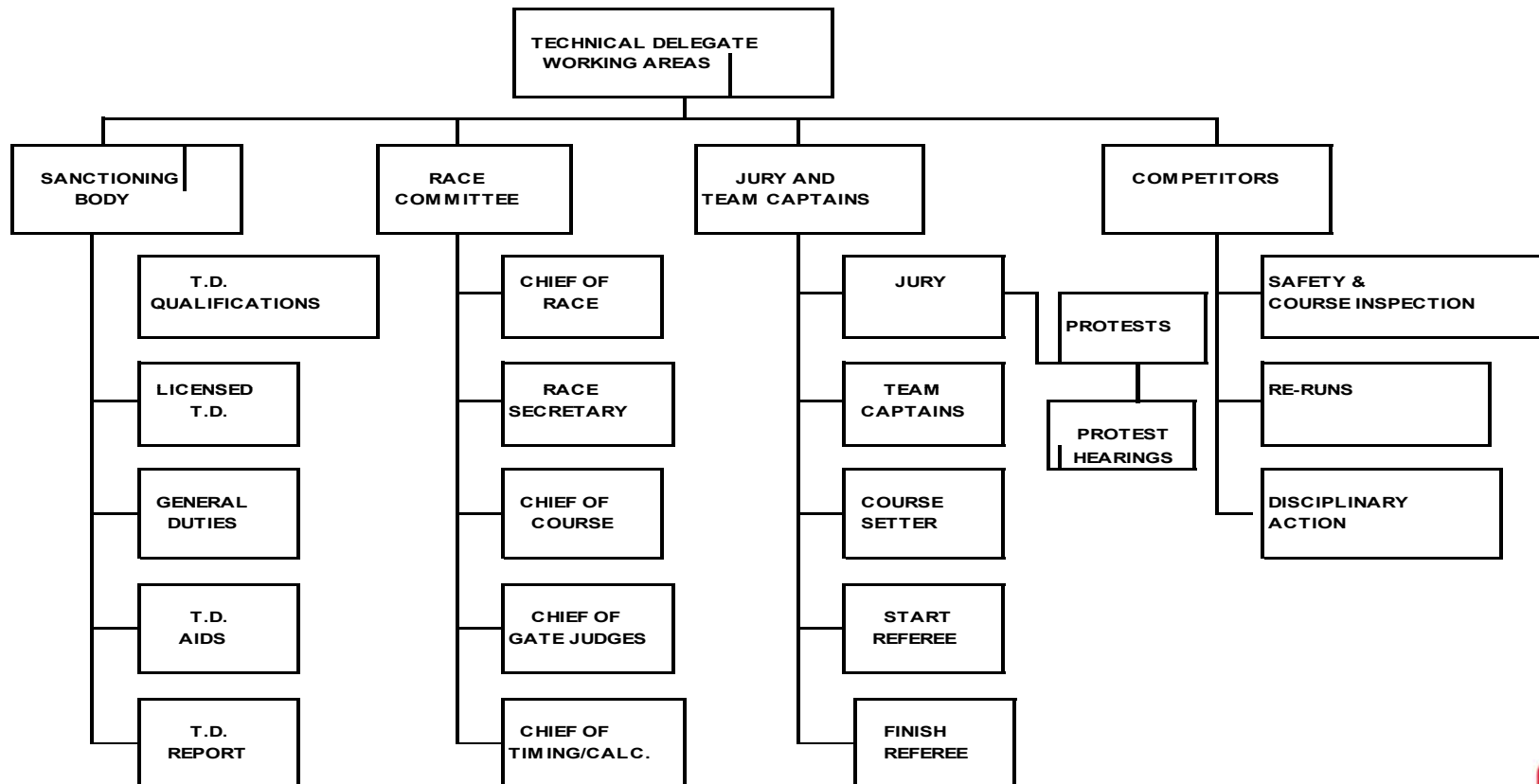
- rules advisor, security advisor, certifies race results

Representative the Sanctioning Body 602.1.1	Chair of the Competition Jury 601.4.5	Member of the Race Organizing Committee 601.3
FIS or Alpine Canada Alpin, as applicable <ul style="list-style-type: none"> • Certification of race results (sole discretion, not a jury decision) • Enforcement of technical standards 	<ul style="list-style-type: none"> • Leader, facilitator, advisor • Panel of equal votes except for breaking ties • Chief of Race Referee / Asst Referee, as applicable 	<ul style="list-style-type: none"> • Chief of Race • Referee(s) • Start Referee • Finish Referee • Jury advisors / eyes of the jury, as appointed • Chief of the Course • Chief of Timing and Calculations • Chief of Administration • Chief of Gate Judges • Chief of Medical and Rescue • Chief of Equipment



Technical Delegate – ICR 602, 601.4.9

- rules advisor, security advisor, certifies race results





Rules for Re-Runs, Sanctions, Disqualifications, Protests
ICR 620s and 640s

Re-Runs, Sanctions, Disqualifications & Protests

Know the ICR ~ the FIS rule book

- 623 - Reruns
- 627 – Not Permitted to Start
- 628 - Penalties
- 629 – Disqualifications
- 640 - Protests
- 641 – Types of Protests
- 642 – Submitting Protests
- 643 – Deadlines for Submittal



REPORT BY THE REFEREE
PROCES VERBAL DU JUGE ARBITRE
PROTOKOLL DES SCHIEDSRICHTERS

Time published Heure d'affichage Anschlagzeit 2017/2/15	Deadline Délai Ablauf	Date Date Datum	The Referee Le juge arbitre Der Schiedsrichter
--	-----------------------------	-----------------------	--

FÉDÉRATION INTERNATIONALE DE SKI
INTERNATIONAL SKI FEDERATION
INTERNATIONALER SKI VERBAND

PROTESTS
RECLAMATIONS
PROTESTE

Protest and deposit received by / Réclamation et caution reçues par / Protest und Betrag hinterlegt bei

FÉDÉRATION INTERNATIONALE DE SKI
INTERNATIONAL SKI FEDERATION
INTERNATIONALER SKI VERBAND



Jury Minute with Protest



MINUTES OF JURY DECISIONS (WITH PROTESTS) PROCES-VERBAL DES DECISIONS DU JURY (AVEC RECLAMATIONS) PROTOKOLL DER JURYENTSCHEIDE (MIT PROTESTE)

Place / Lieu / Ort	Country / Pays / Land	codex
Name of event Nom de l'événement Name der Veranstaltung	Date Date Datum	
Category	Gender	Event
Jury members present / Membres du jury présents / Anwesende Mitglieder der Jury		
Function Fonction Funktion	Surname, First Name Nom de famille, Prénom Familienname, Vorname	NAT
		With voting rite Avec droit de vote Mit Stimmrecht
		Signatures Signatures Unterschriften (please sign and print)
Technical Delegate Délégué Technique Technischer Delegierter		YES <input type="checkbox"/> NO <input type="checkbox"/>
Referee Arbitre Schiedsrichter		YES <input type="checkbox"/> NO <input type="checkbox"/>
Assistant Referee Arbitre-assistant SR-Assistent		YES <input type="checkbox"/> NO <input type="checkbox"/>
Chief of race Dircteur d'épreuve Rennleiter		YES <input type="checkbox"/> NO <input type="checkbox"/>
Start Referee Juge au départ Startrichter		YES <input type="checkbox"/> NO <input type="checkbox"/>
Finish Referee Juge à l'arrivée Zielrichter		YES <input type="checkbox"/> NO <input type="checkbox"/>
Others present at the meeting / Autres personnes convoquées / Andere eingeladene Personen		
Summary of reasons for protest / Rappel succinct du motif de la réclamation / Kurze Beschreibung des protestgrundes		ICR References Références RI/S/ Bezugsquellen IWO
Decision / Décision / Entscheid		
Time Published / Heure d'affichage / Anschlagzeit	Date / Date / Datum	Signature of TD Signature de DT Unterschriften des TD (please sign and print)

FÉDÉRATION INTERNATIONALE DE SKI
INTERNATIONAL SKI FEDERATION
INTERNATIONALER SKI VERBAND



Jury Case Studies



**Put on your
thinking cap**

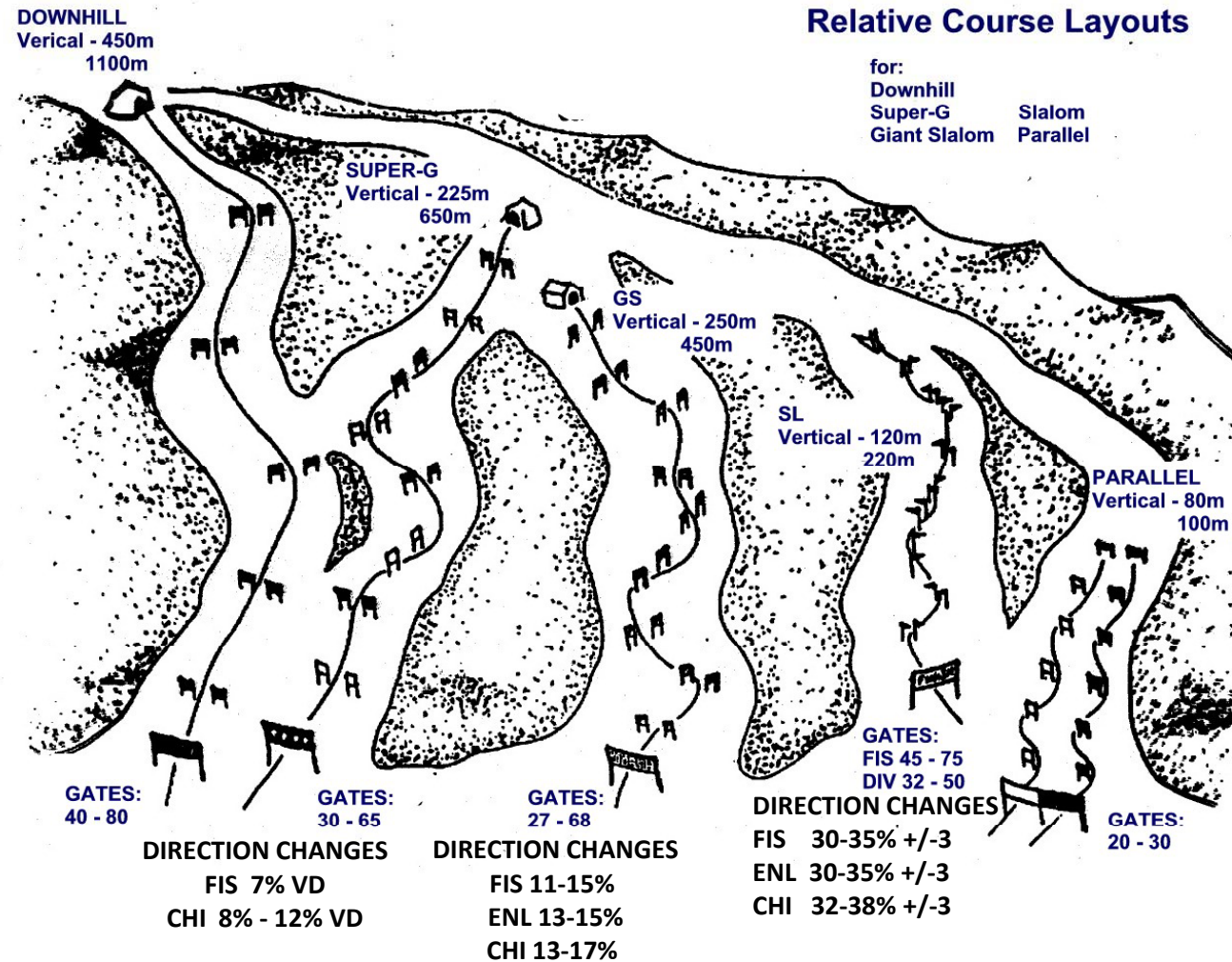




Rules for Race Courses

The Race Course

- DH
- Super G
- GS
- SL



Race Course Technical Specifications

Check List for vertical drop (VD), number of gates (NG) and number of direction changes (DC)

EVENT		OWG/WSC	WC	COC	FIS	CHI	ENL	
DH (Art. 700)	L	VD	450 – 800				1 Run: 400-500m 2 Runs: 300-400m	
		Gate Panel	0.75 x 0.50 //colour for gate panels (see art. 701.3.2)					
	L							
	M	VD	350 – 450 (2 Runs Race)					
		NG	as required					
Downhill	M	VD	800 (750 ¹) - 1100	500 - 1100	450 - 1100		1 Run: 400-500m 2 Runs: 300-400m	
	L	VD	140 - 220	120 - 200		100 - 160	80 – 120 3 Runs: 50 min	
	Slalom	L	DC	Number of direction changes 30%-35% (+ / - 3)			32%-38%(+/-3)	30%-35% (+ / - 3)
		M	VD	180 - 220	140 - 220		100 - 160	80 – 140 3 Runs: 50 min
GS (Art. 900)	L	VD	300 - 400	250 - 400		200 - 350 ²⁾	200 - 250	
	Giant Slalom		Number of direction changes					
		L	DC	11% - 15%			13% - 18%	13% - 15%
		M	Gate Panel	0.75 x 0.50 red (orange)& blue (see art. 695)				
		M	VD	300 - 450	250 - 450		200 - 350 ²⁾	200 - 250
SG (Art. 1000)	L	VD	400 - 600	350 - 600		250 - 450	350 - 500	
	Super-G		Number of direction changes					
		L	DC	6% min		7% min	8% - 12%	7% min
		M	Gate Panel	0.75 x 0.50 red (orange)& blue (see art. 695)				
		M	VD	400 - 650		350 – 650	250 - 450	350 - 500
P (Art. 1220) Parallel	L	VD	80 - 100			U14: 60-U16: 80		
	M	NG	20 - 30			U14: 12 – 15 U16: 15 – 22		
		Gate Panel	0.75 x 0.50	red course / blue course				

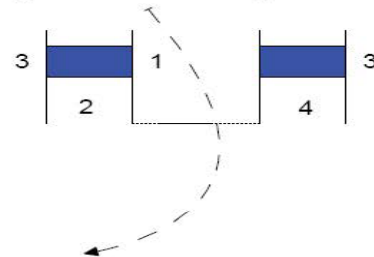
¹⁾ In exceptional case (see art. 701.1.1)

²⁾ see art. 901.1.4



Course Setting Terms

Fig A Giant Slalom/Super G/Downhill



- 1. Turning Pole
- 2. Turning Gate
- 3. Outside Pole
- 4. Outside Gate

Fig C Slalom

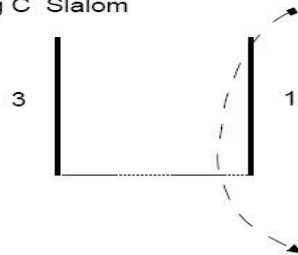
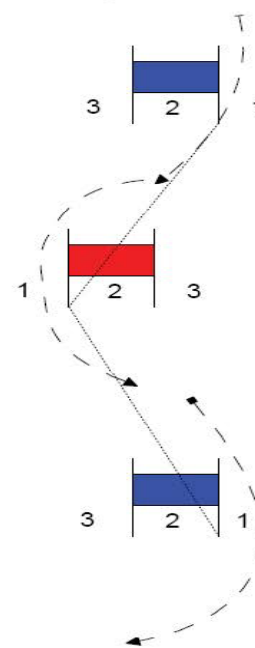


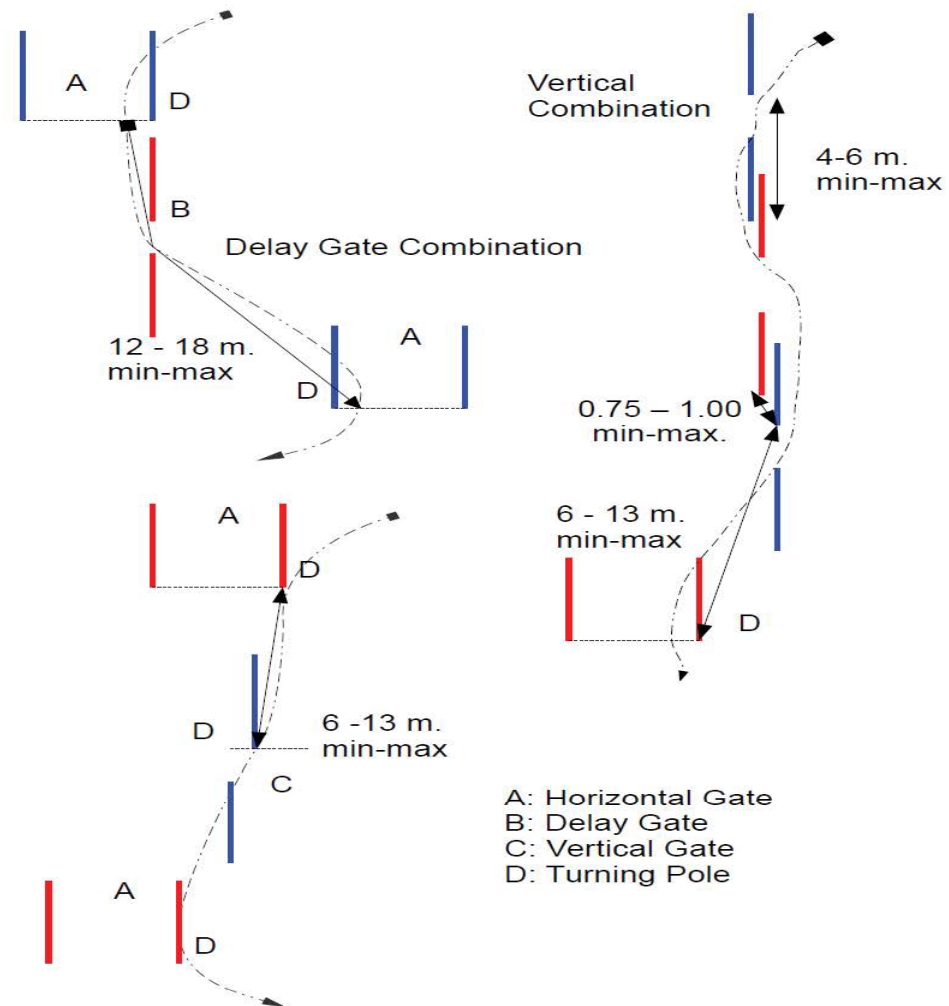
Fig B Parallel



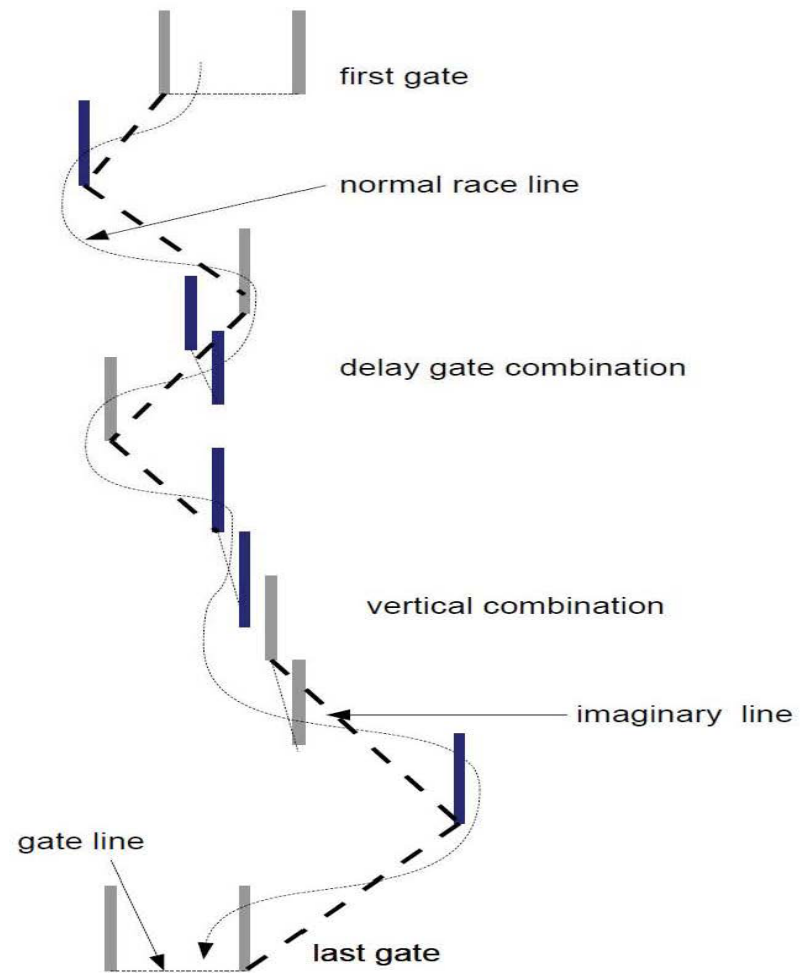
Slalom – ICR 800



Slalom



Slalom

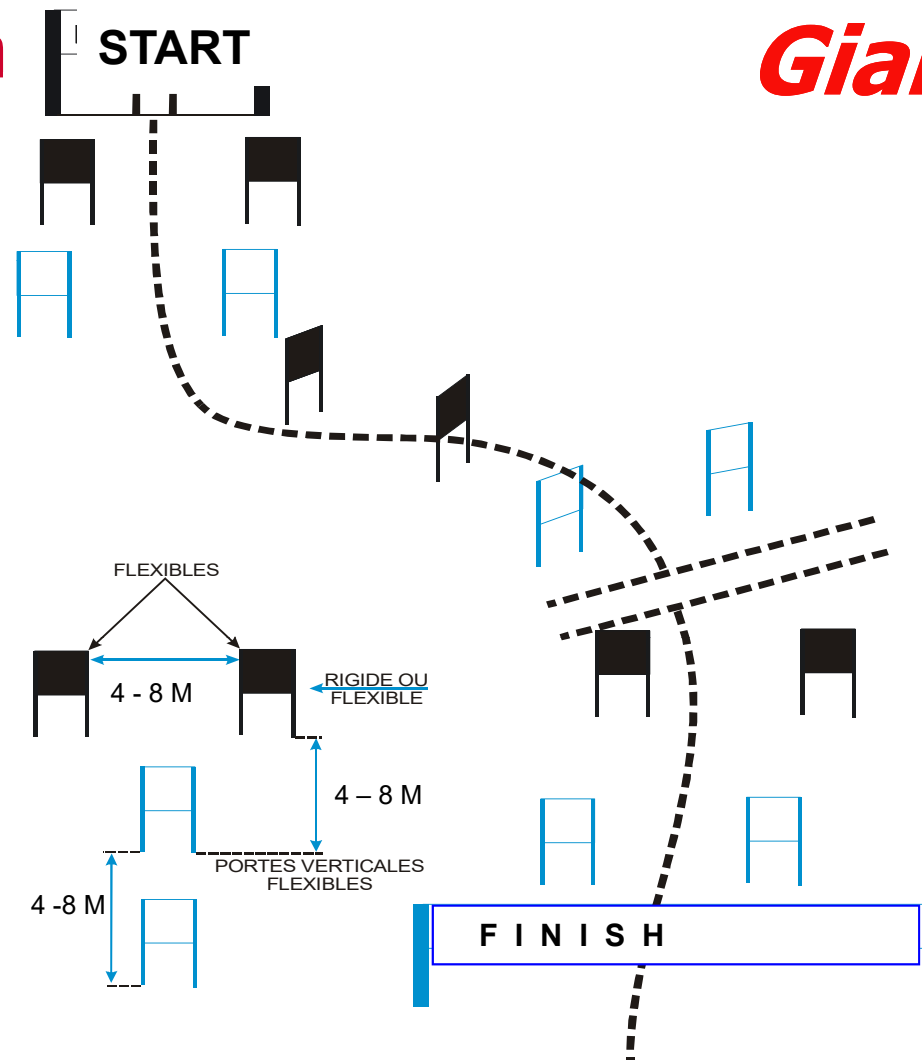


Giant Slalom – ICR 900



Giant Slalom

Giant Slalom



Super G – ICR 1000



Super G

- FIS Race Event
 - DH or Super G race and one run SL race
 - If possible both races on the same day
 - Racers seeded by “speed” or SL points of 1st event (see ICR 621.3.3)
 - 2nd run event Start List is reverse start order of the 1st run race results



Super G

ACA National Points Races

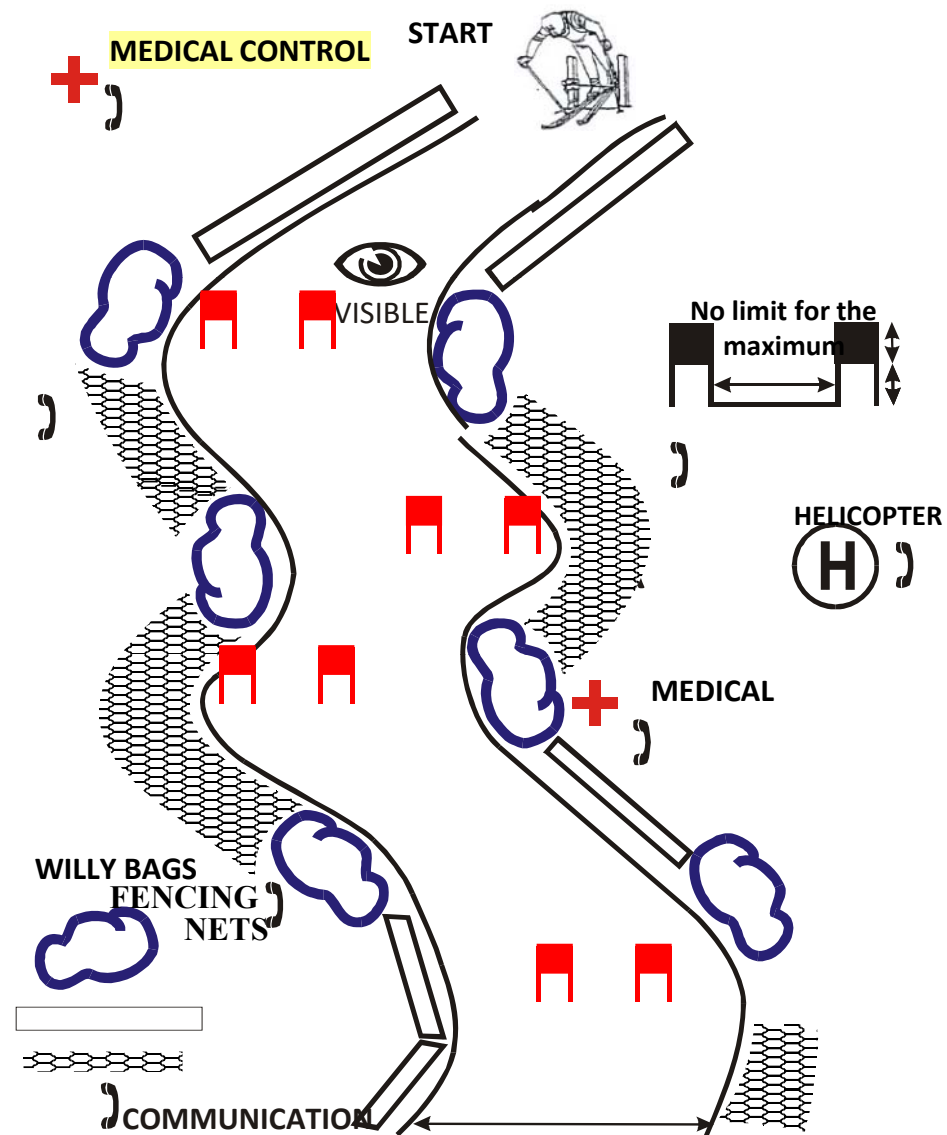
NCR 2.2.2 National points Super G races should be run on FIS SG / GS homologated courses. For Super G races calendared on lower elevation slopes, PSO approval is needed. The PSOs must ensure that athlete security is appropriate to the venue.



Downhill – ICR 700



Downhill



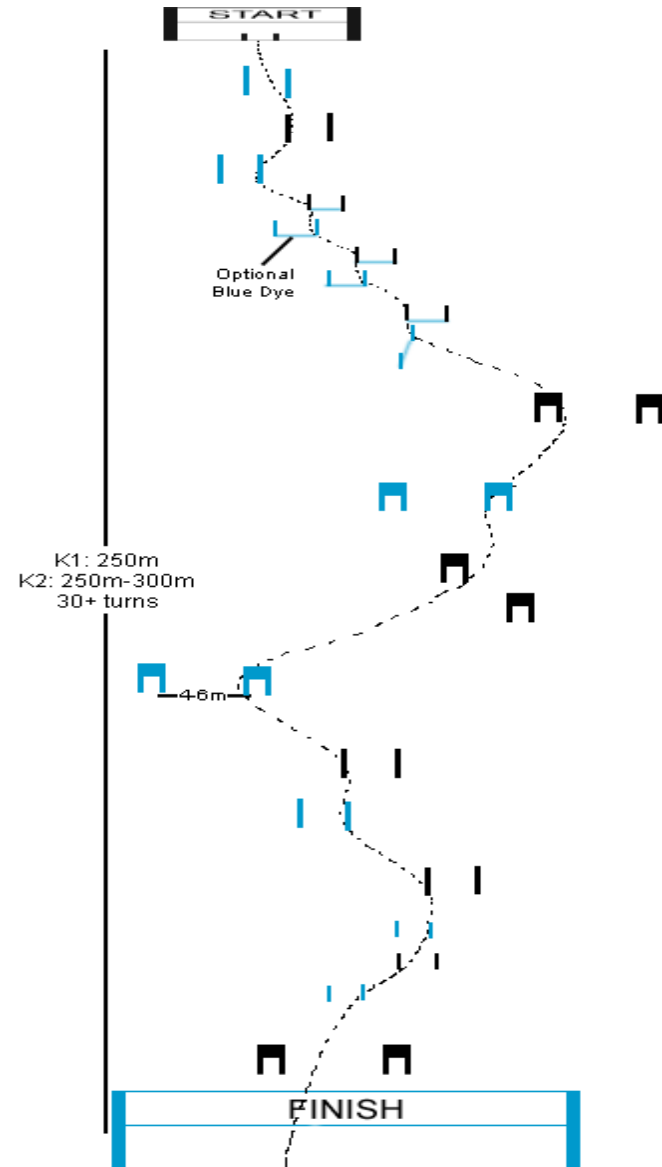
Alpine Combined

- FIS Race Event
 - DH or Super G race and one run SL race
 - If possible both races on the same day
 - Racers seeded by “speed” or SL points of 1st event (see ICR 621.3.3)
 - 2nd run event Start List is reverse start order of the 1st run race results



Kinder Combi

- MAXIMUM VERTICAL DROP ~ K1 – 250M
- KK TECHNICAL – MIXTURE OF GS, SL & STUBBY GATES
- KK SPEED – MIXTURE OF GS AND SG GATES
- ON THE SAME COURSE
- MINIMUM # OF DIRECTION CHANGES – 30
- NO MAXIMUM
- MINIMUM GATE DISTANCE - 0.75M
- MAXIMUM GATE DISTANCE - NOT MORE THAN 28M
- GATE WIDTH ~ MINIMUM DISTANCE - 4M
- MAXIMUM DISTANCE - 8M
- KINDER SLALOM & GIANT SLALOM RULES APPLY





Race Course Preparation & Security

Course Preparation

- **Planning**
- **Selection of Race Course**
- **Snow Preparation**
- **Protection Installations**



Course Preparation

- Machine Grooming – tilling
- Snow making
- Water
- Water Bar
- Chemicals



Protection Installations

- Fencing
 - ‘C’ fencing
- Netting
 - ‘A’ system - ‘B’ netting
- Padding
 - Willey bags



Protection Installations



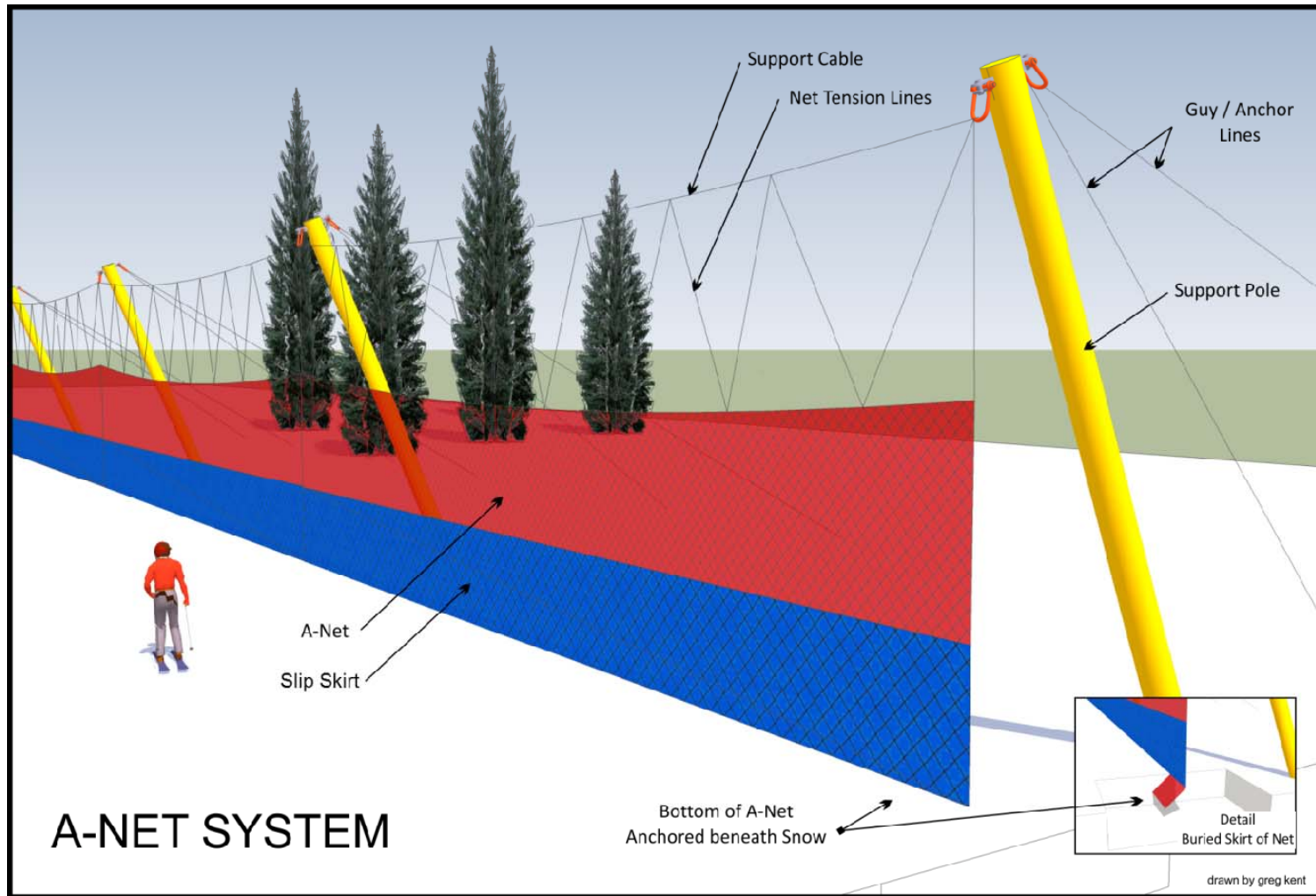
Protection Installations



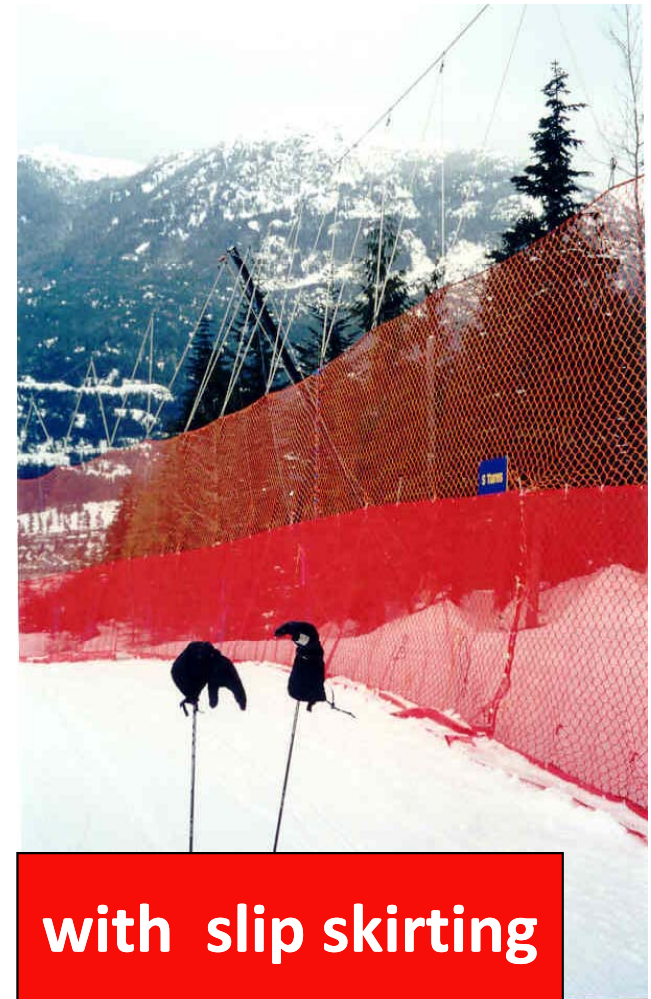
Protection Installations



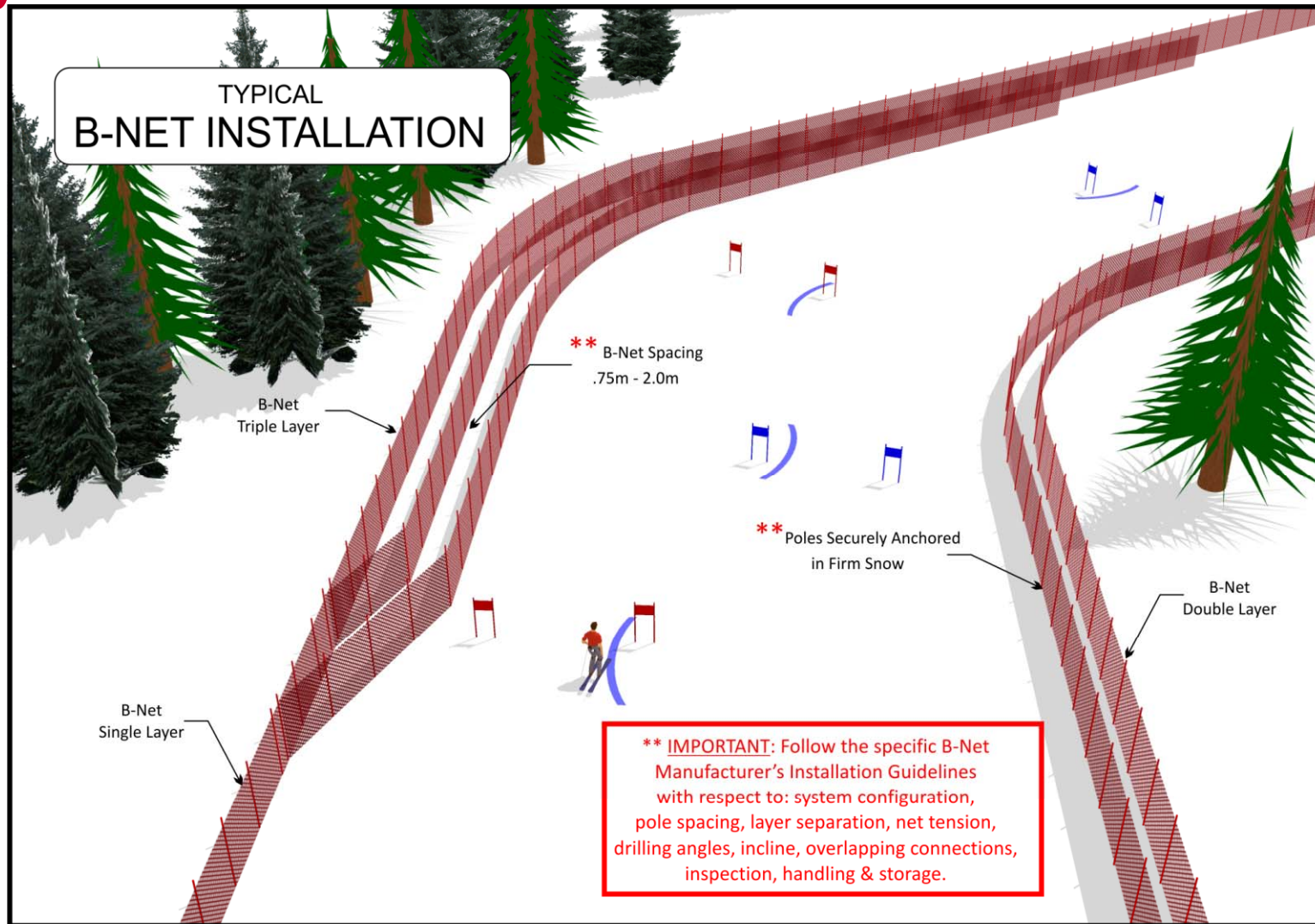
A systems



A systems



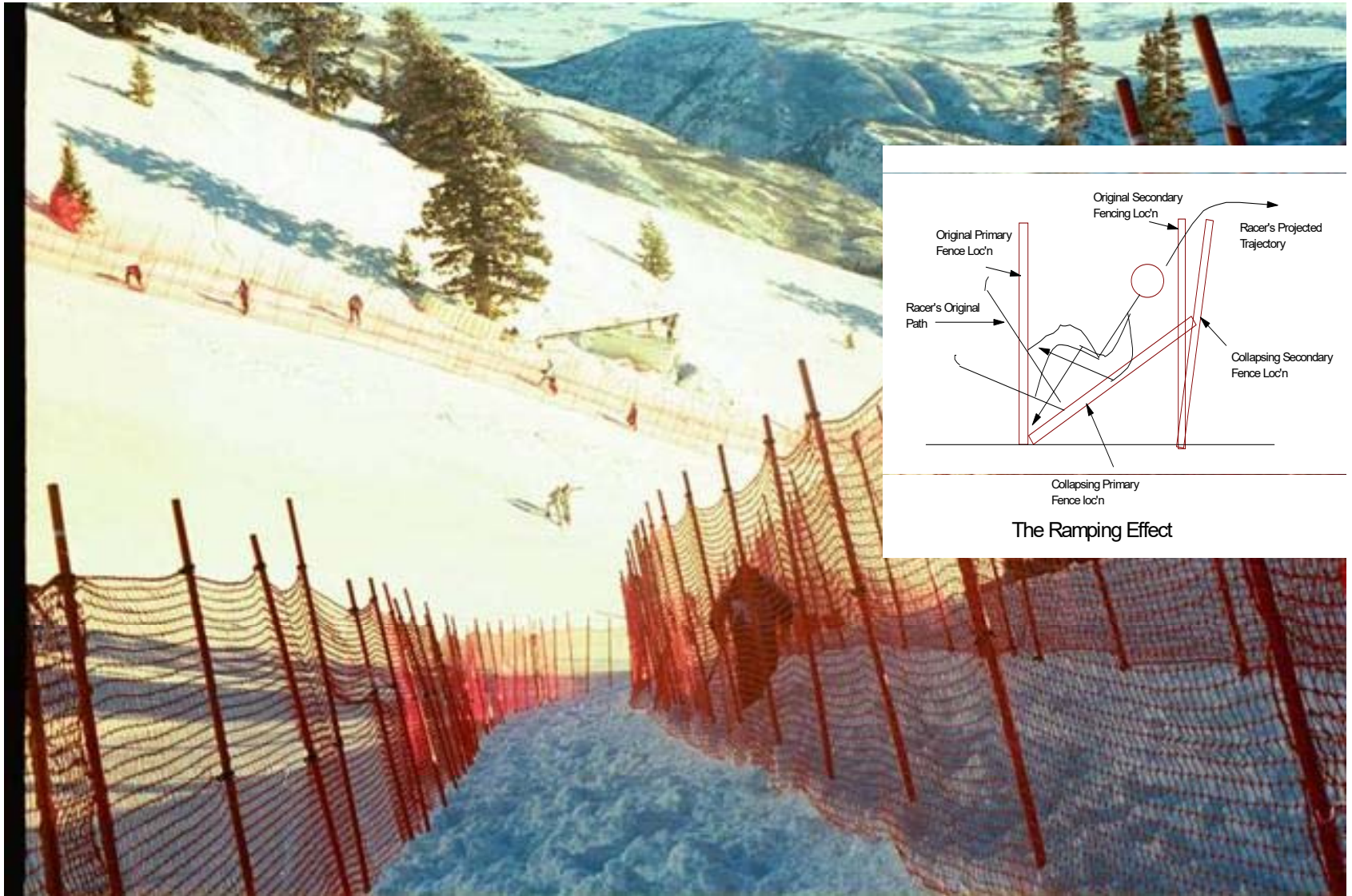
B System



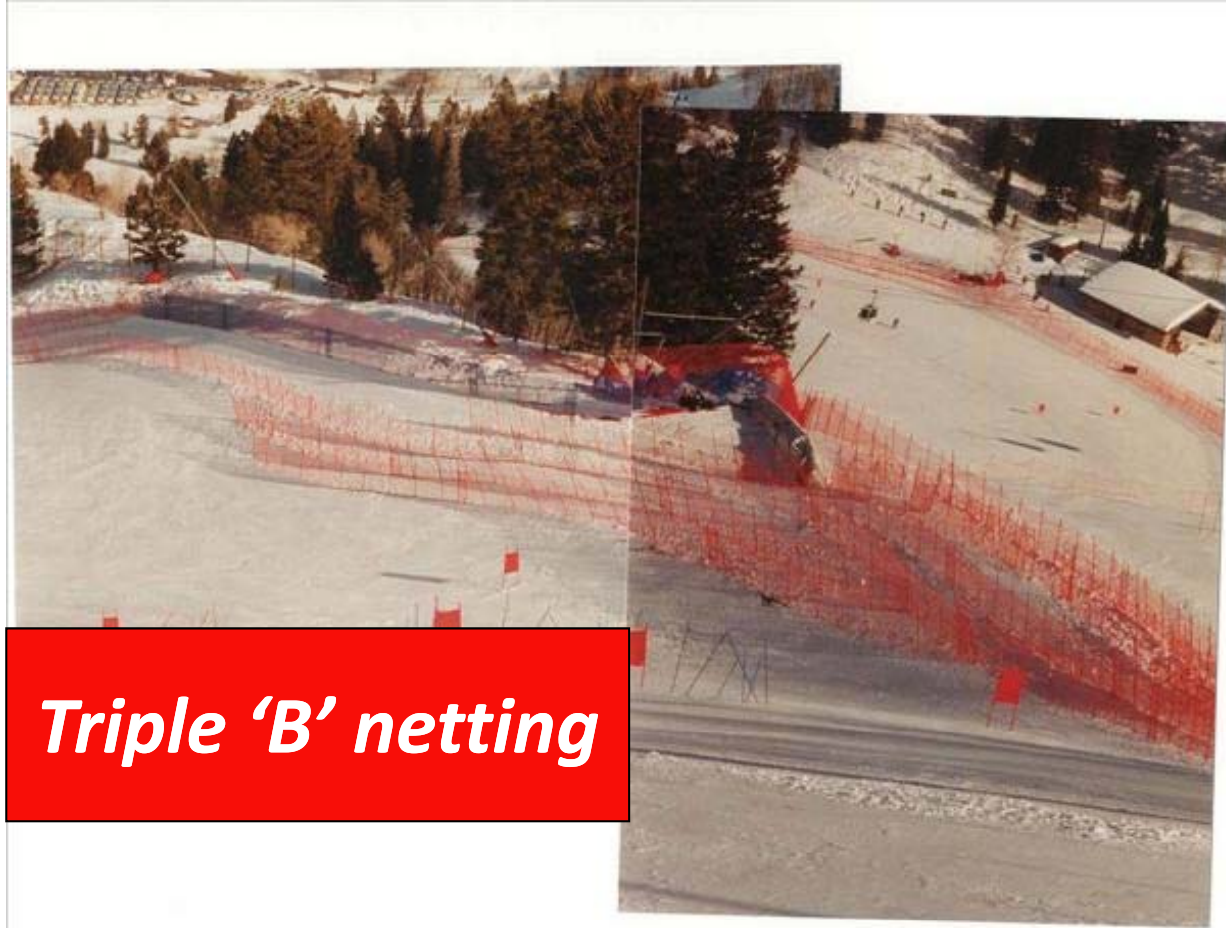
B net



B net



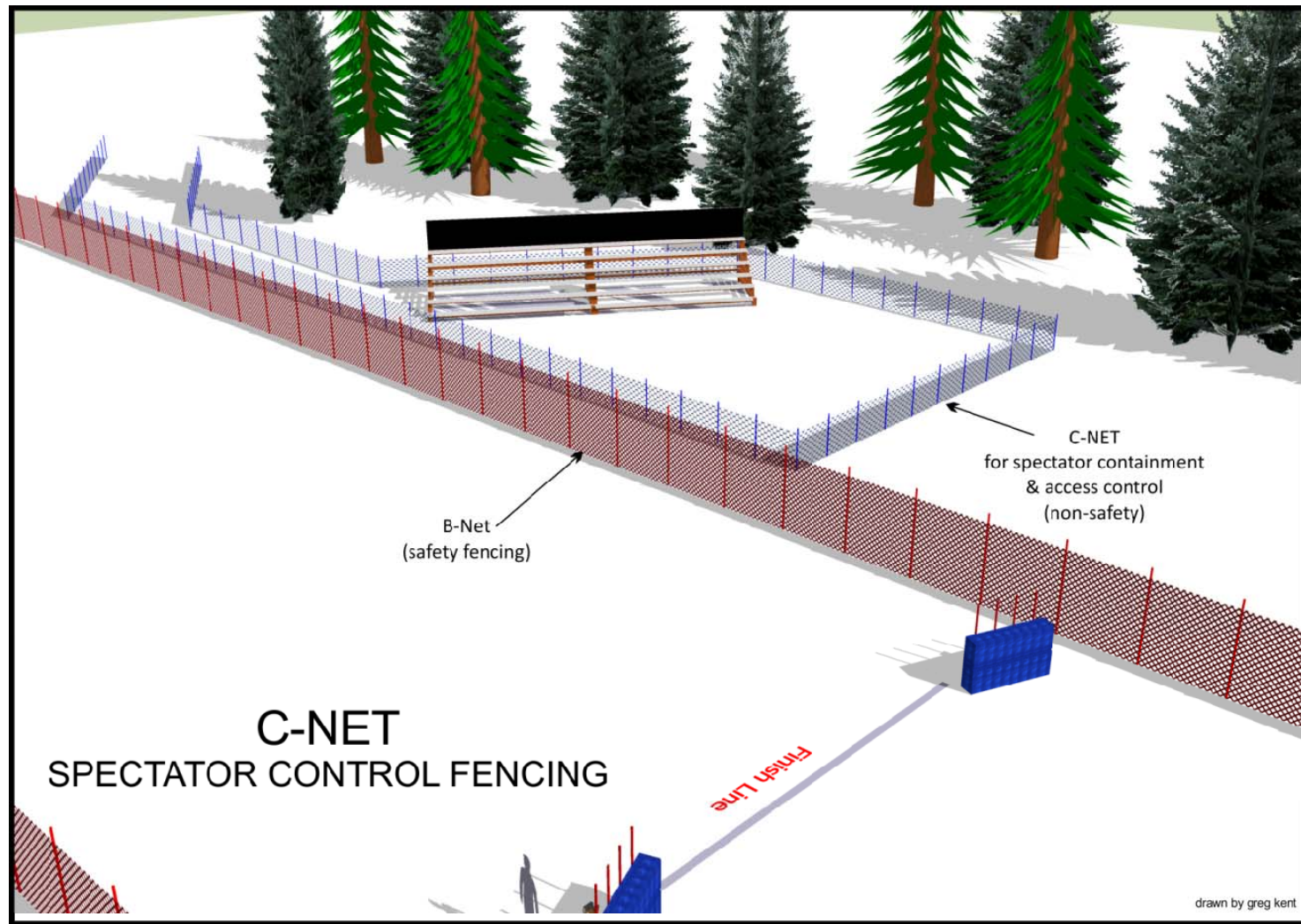
Course Setting Terms



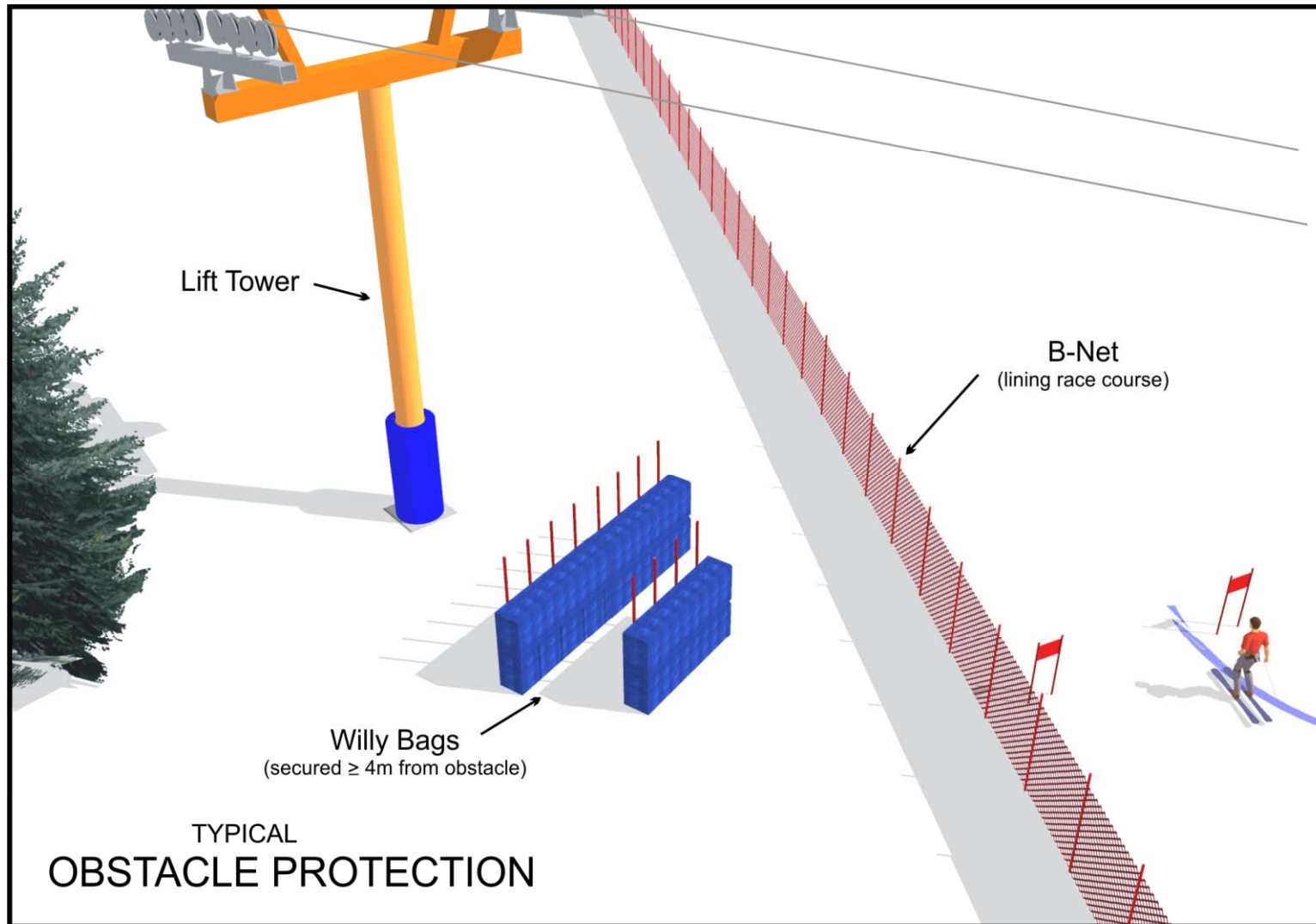
Triple 'B' netting



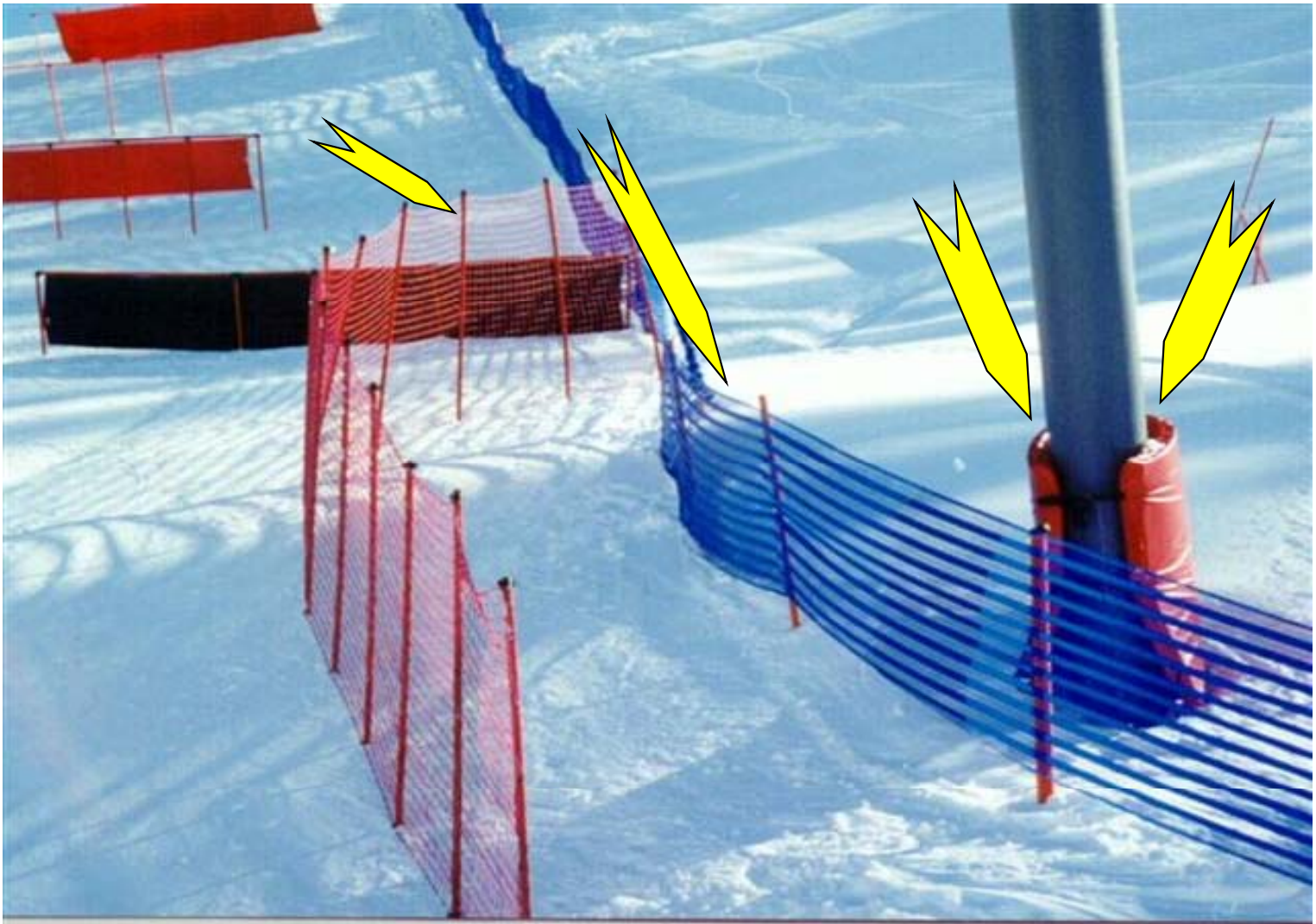
C fencing



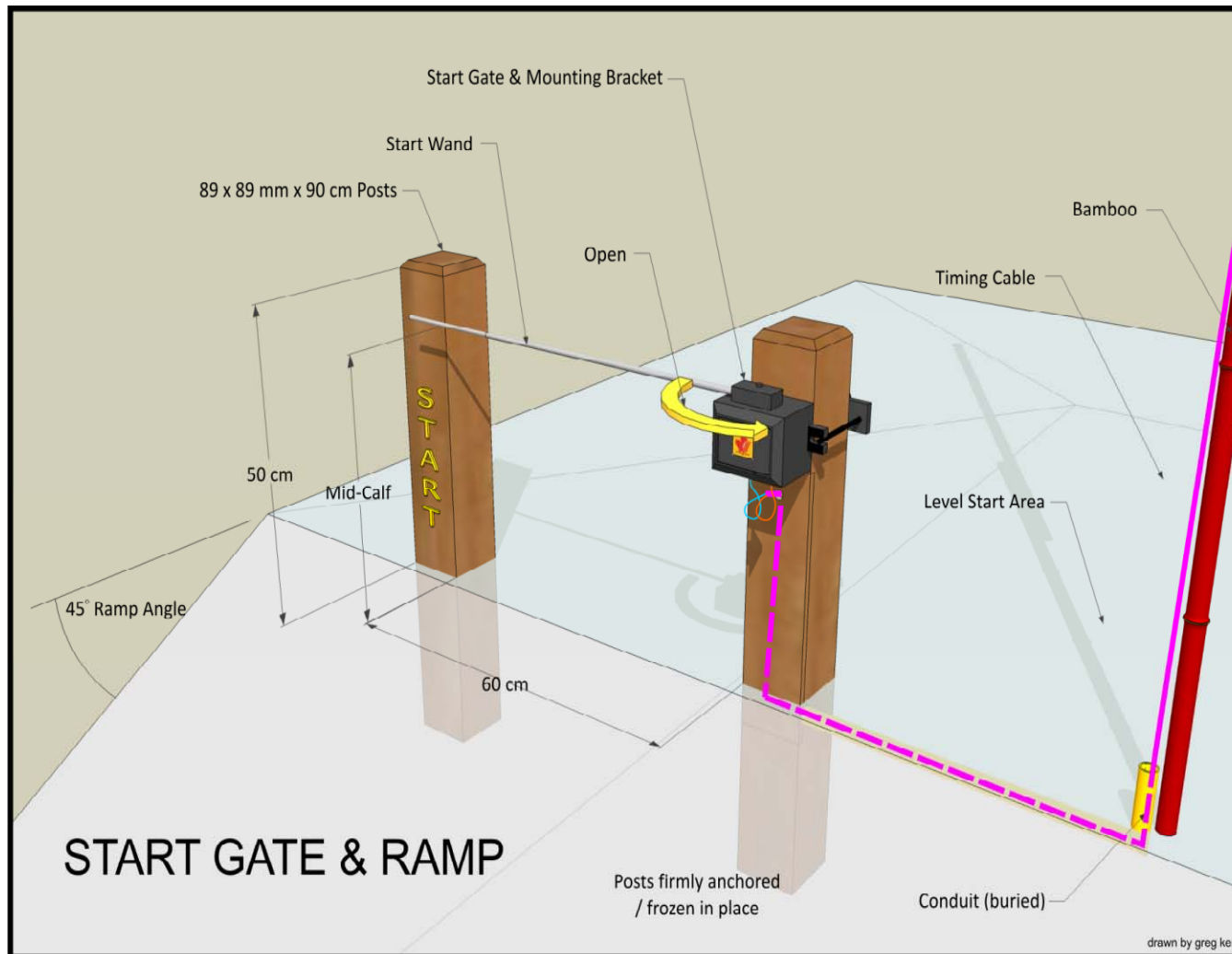
Obstacle Protection



Discuss



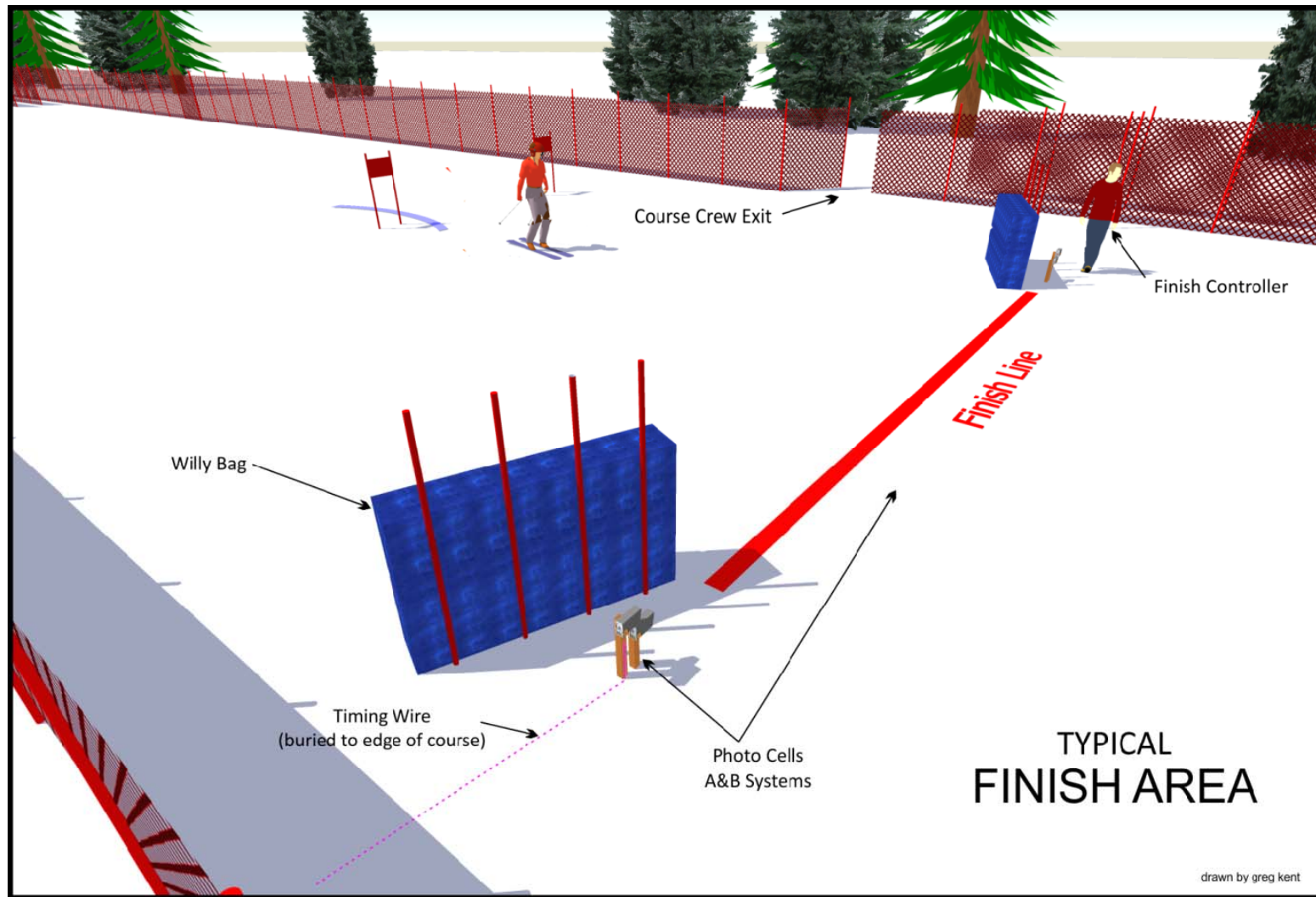
Start Area – ICR 613.1, 613.2



Start Area



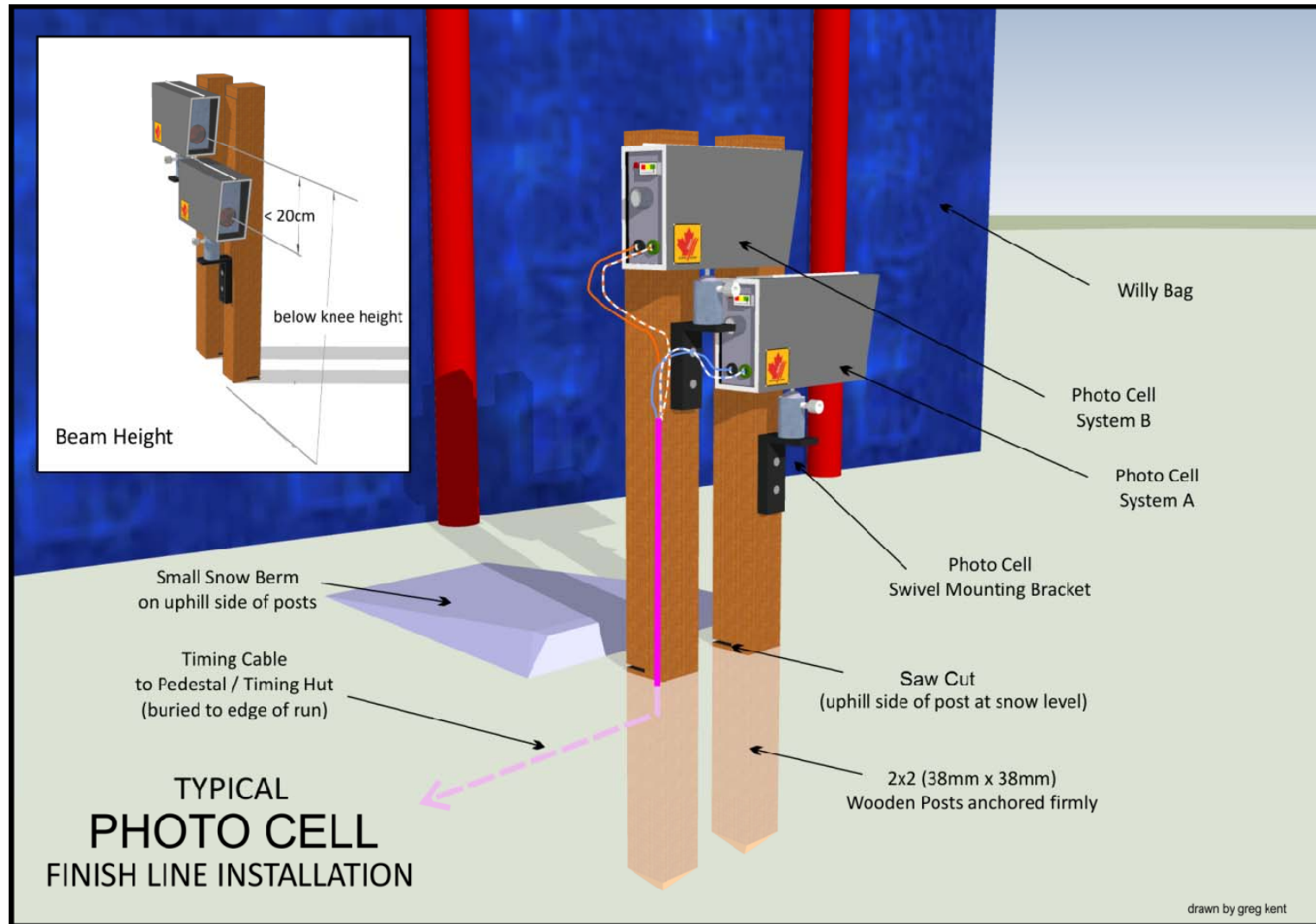
Finish Area – ICR 615.1, 615.2



Finish Area



Photo Cell Protection



Course Inspection

ICR 601.4.6

603.7.4

608.12.7

614.1.5

614.3.2

628.4





Gate Judging

Gate Judges

ICR 660 - 669

- Checklist for Chief of Gates
- Guidelines for Gate Judges
- Number of Gates per GJ
- GJ Quiz



Gate Judging Terms

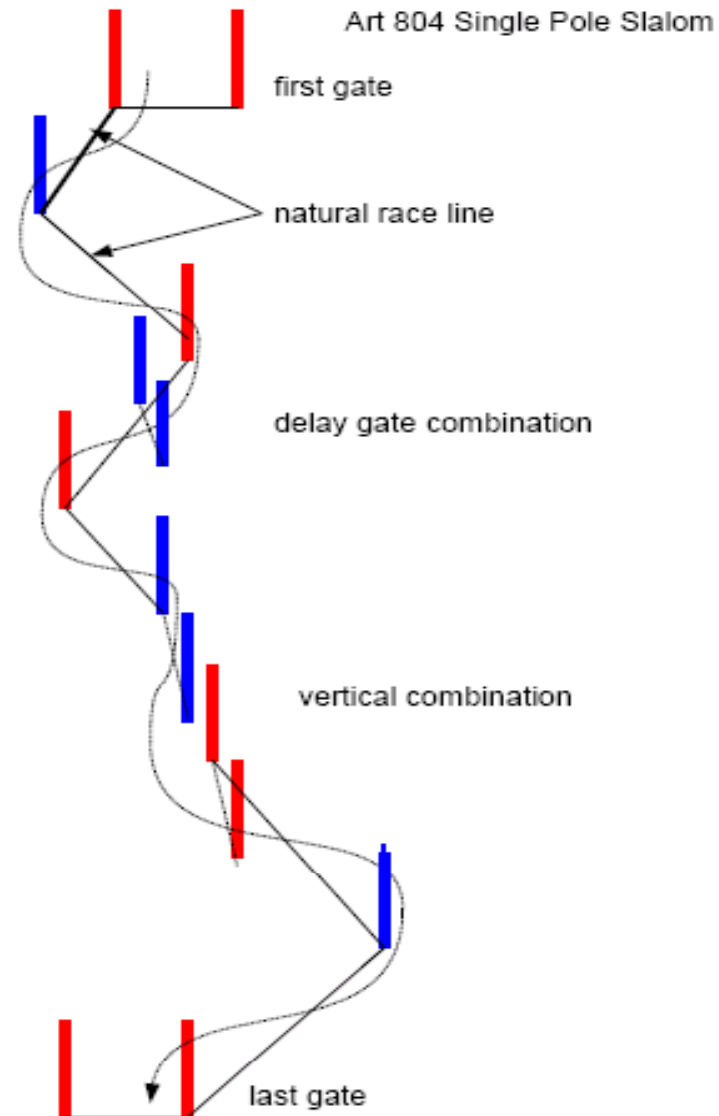


Correct Passage

Single Pole/Panel

804.3, 904.3

In single pole SL and GS, both feet and ski tips must have passed the turning pole on the same side, following the normal race line crossing the imaginary line from turning pole to turning pole.



Correct Passage

NO CLIMING

614.2.3

If a competitor comes to a complete stop (e.g. after a fall), he must no longer continue through previous or further gates.

- All fixed start disciplines (GS, SG, DH)

Climbing permitted for SL as long as the competitor does not interfere with the run of the following competitor **OR** [the competitor] **has not** been passed by a following competitor.



Correct Passage Videos





Timing

Timing - ICR 611

- Rules of Timing
 - Multiple communications
 - Printed electronic timing to 1/100th second
 - Hand timing mandatory
 - Electronic timing failure
- Equivalent Electronic Time – EET
- National Timing Form



Timing Synchronization

- **Timing Booklet, Alpine Skiing, v2.54 May 2016**
- Synch confirm at +1 minute:
- Synchronization to the Time of Day for **all** systems must be accomplished. Connect all timing devices that run in time of day at one start source (**one single contact only for checking**) and start the time of day of all timing devices. Trigger the timing devices again after 1 minute and check if the time of day for this impulse is within a **1/1000ths (0.001)** for System A and System B timers. **If they are not, you must re-synchronized** and try again.

. . . .



Timing Synchronization

- Homologated starting gates have two separate contacts. It is not sufficient to synchronize the timers by simply opening the start gate.
- Synchronization must be executed with all timers connected to receive the start impulse from a single source. Use of a single “plunger” trigger is the preferred method. Alternatively, all timers must be connected to just the System A pair or just the System B pair of plugs from a start gate.

A Timing Best Practice:

- After the forerunner reports have been received from the Finish Referee, the TD should seek or receive confirmation from the Chief of Timing that:
 - all of the timers are correctly synchronized,
 - both the start and the finish hand timers are operating correctly, and
 - both the start and the finish hand timers are being operated correctly.



Electronic Equivalent Time

611.3.2 Utilization of times taken by hand

Hand times may be used in the official results after a correction has been calculated.

Effective fall 2017, the missing System A **time of day** element (start impulse or finish impulse) is calculated to the precision of the System A timer (1,000's or 10,000's of a second, as applicable) and manually inserted into the timing data (M flag).



EET

- TOD Replacement produces better result, most of the time
- TOD replacement works with or without synchronization
- Math can be done either way, alternate minus primary or primary minus alternate
- For athletes missing both start and finish time, NET Time calculations (old method) produces exact same result as doing the math with a replaced TOD start and replaced TOD finish
- Replacement calculations should be done to the .001 precision
- **Look for and use electric system B whenever possible, no matter how you do the math, electric gives a much better result!**



EET

611.3.2.1

Calculation of the correction **time of day impluse**:

Subtract the electronic time from the time taken by hand (or vice versa) for the all of the 10 competitor times preceding the missing time. If there are not 10 times before, complete the calculation with the remaining times after the missed time.

The sum of the 10 time differences is divided by 10 and rounded up or down (0.044 -> 0.04, 0.045 -> 0.05) to give the correction which must be applied to the hand time of the competitor without an electronic time.

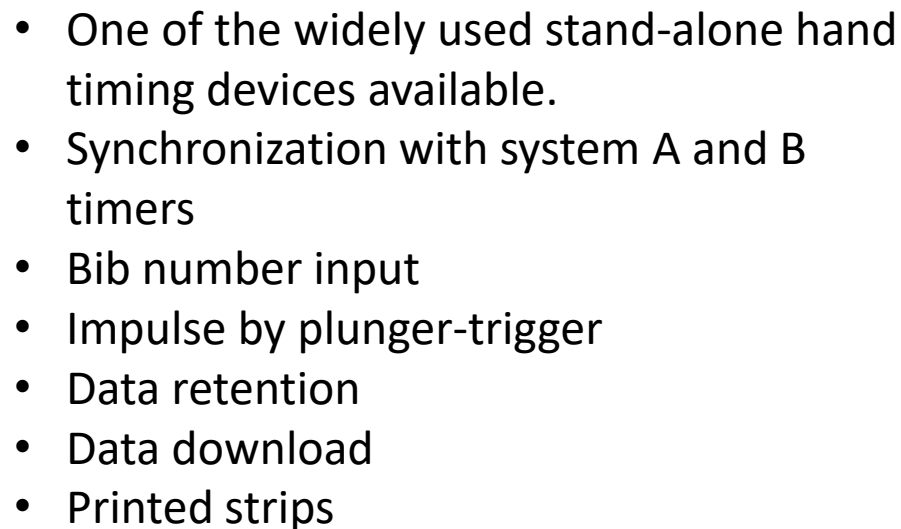


EET

.001 primary and .01 replacement system (hand timing)					Calculate to
	Bib	Sys A TOD Fin	HT Finish TOD	Sys A - HT	Sys A precision
	27	08:19:18.019	08:19:17.88	0.139	
	30	08:21:20.141	08:21:19.92	0.221	
	31	08:27:20.215	08:27:20.14	0.075	
	32	08:28:01.178	08:28:01.13	0.048	
	33	08:28:40.759	08:28:40.58	0.179	
	34	08:29:21.983	08:29:21.94	0.043	
	35	08:30:03.018	08:30:02.86	0.158	
	36	08:30:38.179	08:30:38.03	0.149	
	38	08:31:20.619	08:31:20.52	0.099	
	39	08:32:01.521	08:32:01.43	0.091	
Missing	40		08:32:43.89	1.202	
			/10	0.120	
		Replacement Finish	Add adjust to HT	Primary Start	Resulting Net Time
		08:32:44.010		08:31:24.489	00:01:19.521



- Using digital stop watches means using recording forms



CODEX : F= _____ – M= _____ Recorded by/Chronométré par: _____
v.2011-10



Start, Countdowns, Finishes

- **Start Timing** – shall measure the exact time the competitor crosses the start line with his leg below the knee
- **Start Countdowns**
 - Start signal / interval 613.4
- **Valid and False Starts** (613.6, 613.7, 628.5, 629.3)
- **Determination of Finish** (614.1.1, 615 f)
- **Timing of the Finish**



Technical Timing Report

Required for all FIS races, and ACA provincial / national championships.

Submit to the National Timing Group c/o
officials@alpinecanada.org



Technical Timing Report

Timing & Data Technical Report				Alpine		CODEX example 0247	
To accompany TD Report Immediate transmittal. One form required for each Codex				321		Version 7.1	
Location:	Bromont, Quebec			DH <input type="checkbox"/> SL <input type="checkbox"/> GS <input checked="" type="checkbox"/> SC <input type="checkbox"/> SC <input type="checkbox"/>			
Nation:	CAN			MEN: <input checked="" type="checkbox"/> LADIES: <input type="checkbox"/>			
Event Name:	SUPER SERIE SPORTS EXPERT						
Date (dd/mm/yy):	02-16-12						
Sys A Timer:	Brand	Model	Serial Number	Homologation #			
Sys B Timer:	TAG HEUER	CP540	1587	TAG.070T.08			
Start Gate:	TAG HEUER	CP540	1215	TAG.070T.08			
Finish Cells A:	ALGE	STSnM2S	0212038	ALG.S53T.10			
Finish Cells B:	TAG HEUER	HL 2-32	769	TAG.L49T.10			
Finish Cells B:	TAG HEUER	HL 2-32	770	TAG.L49T.10			
Software	Brand	Version	Date	Results = Tapes			
Scoring and Results Preparation:	SplitSecond	National FIS 6.24 rev 9	2012-02-09	Confirmed			
Connections to Start:	System A	System B	Voice Comm.				
Cable, Radio or other- (Specify)	Cable	Cable	Cable/Radio				
POWER ON Time (warm-up):	7:16			At least 20 minutes before Synchronization.			
Time of day expressed in thousandths:	1st Run		2nd Run				
Synchronization Time	System A (TOD) #	System B (TOD) #	Hand Sync.	System A (TOD) #	System B (TOD) #	Hand Sync.	
Synch confirm at +1 minute	9:50:00	9:50:00	9:50:00	13:57:00	13:57:00	13:57:00	
Start TOD First Competitor *	10:00:35,232	10:00:35,230	Net Time	14:08:37,734	14:08:37,732	Net Time	
Finish TOD First (1) (52) *	10:01:16,529	10:01:16,527	41,29	14:09:22,789	14:09:22,787	45,05	
Hand Time First Competitor *			41,41			44,94	
TOD Last Competitor *	10:58:41,257	10:58:41,245		14:41:27,308	14:41:27,300		
Finish TOD Last (83) (65) *	10:59:29,319	10:59:29,306	48,06	14:42:11,470	14:42:11,462	44,16	
Hand Time Last Competitor *			48,08			44,32	
* First and Last to Finish with complete data.							
Best run-time System A	Bib : (1)		41,29	Bib : (15)			
Were all Results from system A?	Indicate: <input checked="" type="checkbox"/> Yes <input type="checkbox"/> No						
List any or all bib numbers used in the results timed on any system other than system A in all runs (indicate run):							
WHY? <input type="checkbox"/> Batteries <input type="checkbox"/> Snow obscuration <input type="checkbox"/> wire break <input type="checkbox"/> Photo cell alignment <input type="checkbox"/> Other? (describe)							
Data Source for replacement system A time. (resp. ICR 611.2.1) ? <input type="checkbox"/> System B <input type="checkbox"/> System C <input type="checkbox"/> Manual							
Comments:							
We certify that the timing and calculations of this event adhered to the FIS rules.							
YES <input checked="" type="checkbox"/> NO <input type="checkbox"/>							
Chief of Timing - Name (Print)	Bissonnette Roch		Email, Telephone	Signature			
			roch@diacarb.com 450-357-6100				
Technical Delegate - Name, NAT (Print)	Lambert, John (CAN)		Email, Telephone	Signature		FIS ID #	
			J.LAMBERT - 562 SYMPARCO.CA 647.222.135			1018	

Download this form from www.fis-ski.com





Points, Penalty, Results

Points System

- National Points System
- FIS Points System
- Points List – On the FIS & ACA web sites
- Race Points – Specific formula
- Race Penalty – Calculated number to equalize races on different hills
- Racer Points or Result – Race points + Penalty = Result
- Points – average of two results in each discipline



Race Points

$$P = [(Tx/To)-1] \times F$$

- All calculations must be done to at least 4 decimal places ~ no rounding off till calculation complete
- Round off to 2 decimal places as follows:
 - Ignore 4th decimal and use the value of the 3rd decimal place to round the 2nd decimal place
 - 0 – 4 ~ stays the same 5 – 9 goes up



Penalty Calculation

Procedure:

1. List top 10 finishers
2. Add up list pts for the best 5 list point finishers from the top 10
3. Add up the list points for the best 5 list points who **started** the race irrespective of finish
4. Add the results of the best 5 who finished and who started
5. Deduct the race points of the best 5 list points holders
6. Divide by 10
7. Adjust by Z and adder values



PENALTY CALCULATION CALCUL DE LA PENALITE PUNKTEZUSCHLAGSBERECHNUNG

Name of event Nom de l'événement Name der Veranstaltung		
Date Date Datum	Event Epreuves Bewerbe	Name of the TD Nom du DT Name des TDs

The best 10 at finish / 10 meilleurs à l'arrivée / Die besten 10 im Ziel						
Result Résultat Resultat	Number Dossard Nummer	Name Nom Name	Time Temps Zeit	FIS-Points Points FIS FIS-Punkte	Best 5 5 meilleurs 5 besten	Race points Pts de course Rennpunkte

FIS Points of the best 5 started / 5 meilleurs points FIS ayant pris le départ / Die besten gestarteten FIS-Punkte

TOTALS / TOTALS / SUMMEN

(B)	FIS Points of best 5 started Points FIS des 5 meilleurs ayant pris le départ Die 5 besten gestarteten FIS-Punkte	
(A)	FIS Points of best 5 to finish in top 10 Points FIS des 5 meilleurs dans les premiers 10 Die 5 besten FIS-Punkte aus den ersten 10	
(C)	Race Points of corresponding competitors Points compétition de ces concurrents Rennpunkte der entsprechenden Wettkämpfer	
Calculated penalty / Pénalité calculée / Berechneter Zuschlag A <input type="text"/> + B <input type="text"/> - C <input type="text"/> = <input type="text"/> : 10 = <input type="text"/>		
Correction value / Valeur de correction / Korrekturwert (-z → +z Art. 4.4.7)		
Category Adder / Additif de catégorie / Kategorie-Adder		
Penalty applied / Pénalité appliquée / Angewandter Punktezuschlag		
Signature TD / Signature du DT / Unterschrift des TDs		Nr/No/Nr

FÉDÉRATION INTERNATIONALE DE SKI
INTERNATIONAL SKI FEDERATION
INTERNATIONALER SKI VERBAND



Penalty Calculation

- **Some Important Points to Note in National Race Penalty Calculation:**
- The maximum penalty value for a National Level race is **500.00**.
- The “Fill In” point is to be use in case there are less then five racers with NATIONAL points is **500.00** for all discipline. This fill in must also be use if the racer’s points are over **500.00**
- There will be no “**ADDER**” used at National level races.
- There will be no “**Z**” factor’s used at the National level races.
- If two or more competitors have the fifth best points, which should be taken into consideration for the penalty calculation, the competitor with the higher
- race points will be considered for the penalty calculation. (Reason: better penalty).



Source for current variables



Alpine Skiing

2017/2018

1st FIS points list 2017/2018

Valid from 01-07-2017 to 09-08-2017

Category/Catégorie/Kategorie	Race level	Minimum penalty	Maximum penalty
OWG,WC,WSC	0	0.00	0.00
COM	0	0.00	4.00
FQUA,EQUA	0	9.00	999.00
FEC,SAC,UVS,NAC,EC,WJC,ECOM,ANC	1	6.00	999.00
NC	2	8.00	999.00
AWG,CISM,FIS,CIT,UNI,JUN,CORP,NJC,NJR,YOG	3	9.00	999.00
ENL	4	40.00	999.00

MEN							GENERAL		LADIES						
ADDER						Z-Value	Men/Ladies		ADDER						Z-Value
Disc.	Level 0	Level 1	Level 2	Level 3	Level 4		F Value	Max points	Disc.	Level 0	Level 1	Level 2	Level 3	Level 4	
DH	0	0	2	3	13	0.00	1250.00	310.00	DH	0	0	2	3	13	0.00
SL	0	0	2	3	13	0.00	720.00	145.00	SL	0	0	2	3	13	0.00
GS	0	0	2	3	13	0.00	980.00	200.00	GS	0	0	2	3	13	0.00
SG	0	0	2	3	13	0.00	1080.00	250.00	SG	0	0	2	3	13	0.00
AC	0	0	2	3	13	0.00	1150.00	250.00	AC	0	0	2	3	13	0.00

FÉDÉRATION INTERNATIONALE DE SKI
INTERNATIONAL SKI FEDERATION
INTERNATIONALER SKI VERBAND



Penalty Example

Slalom Ladies final SS 2017-01-08
FIS PENALTY CALCULATION

THE BEST 10 AT FINISH:

RACE RESULT	BIB NR.	CODE	COMPETITOR SURNAME+NAME	FIS POINTS	BEST 5	RACE POINTS
1	13	107648	BURGESS, Georgia	47.26	47.26	0.00
2	11	107759	ROUSSIN, Heidi	41.16	41.16	4.31
3	6	107990	SMITH, Sierra	62.41	62.41	4.69
4	9	107811	PATTERSON, Soleil	66.60	66.60	9.25
5	18	107758	OBRIEN, Mikaela	75.90		
6	16	107763	LEVEILLE, Florence	67.38	67.38	15.68
7	22	108023	FAUCHER, Dorothee	78.38		
8	17	107804	THOMAS, Abby	69.13		
9	28	107873	FORTIN, Roxanne	87.78		
10	27	107984	CARDINAL, Frederique	87.29		

THE BEST 5 AT START:

2	11	107759	ROUSSIN, Heidi	41.16
DNF1	4	107696	CUMMING, Meg	42.92
DNF1	12	107695	WEARMOUTH, Antonia	45.40
1	13	107648	BURGESS, Georgia	47.26
DNF2	15	107589	NOLIN, Frederique	47.33

TOTALS

(B) FIS POINTS OF BEST 5 AT START	224.07	-----	
(A) FIS POINTS OF BEST 5 TO FINISH IN TOP 10		284.81	-----
(C) RACE POINTS OF CORRESPONDING COMPETITORS			33.93

CALCULATED PENALTY $284.81 + 224.07 - 33.93 : 10 =$ 47.495
(A) (B) (C)

ROUNDED 47.50

CATEGORY ADDER 3.00

CORRECTION VALUE (Z) +0.00

PENALTY APPLIED: 50.50

LAMBERT JOHN (CAN)#1018

08-01-17 / STATION MONT SAINTE-ANNE LIST: FLW0817 CAN6283.1018 SF9 / 1

DATA PROCESSING BY SPLIT SECOND SOFTWARE TIMING ALGE TIMV2

PXE

8 janvier 2017



Results

- Rules for the form and content of results
- **Accuracy** of input of data is essential for correct preparation of results
- Distribution of race results available from FIS, ACA or PSO depending on level of race.



Results

ALPINE ONTARIO SOUTH PARMALAT ONTARIO CHAMPIONSHIPS CRAIGLEITH SKI CLUB FEBRUARY 26 2000 WOMEN'S SLALOM

OFFICIAL RESULTS

JURY:

TECHNICAL DATA:

TECHNICAL DELEGATE: JF BROUSSEAU CAN NAME OF COURSE: BIG JOHN

REFEREE: ANDREA MARCHAND CAN START ELEV.: 400
CHIEF OF RACE: GRAHAM HESS CAN FINISH ELEV.: 229
VERTICAL DROP: 171

HOMOLOGATION: 403/125/72

COURSE SETTER: BLAIR THOMPSON CAN KIP HARRINGTON CAN
FORERUNNERS: CARRIE GRINTER CAN T. SIMMS-BROWN CAN
TAYLOR S. BROWN CAN C. GRINTER CAN
C. SAVAGE OBR

NO. OF GATES: 62 55
START TIME: 10.50 2.00

WEATHER: PARTLY CLOUDY SNOW: GRANULAR
TEMPERATURE: START 14 C FINISH 15 C ADDER = 5 Z = 8.05 F = 58.0

POS	BIB NO.	CODE NO.	COMPETITOR SURNAME, NAME	NAT	TIME 1ST RUN	TIME 2ND RUN	TOTAL TIME	RACE POINTS
1	2	106345	DAVIS Ashley	CAN	0:52.76	0:50.87	1:43.63	0.00
2	11	106251	VACCHINO Angela	CAN	0:54.20	0:50.03	1:44.23	3.36
3	20	106259	BREAN Jessie	CAN	0:54.36	0:49.96	1:44.32	3.86
4	15	106465	LAWRENCE Sherry	CAN	0:54.60	0:50.14	1:44.74	6.21
5	1	106372	LATTIMER Lauren	CAN	0:54.04	0:50.98	1:45.02	7.78
6	7	106404	WALKER Rachel	CAN	0:53.62	0:51.62	1:45.24	9.01
7	4	106371	LAMBROPOULOS Yota	CAN	0:54.51	0:51.20	1:45.71	11.64
8	18	106378	MORTON Kaylyn	CAN	0:55.93	0:50.65	1:46.58	16.51
9	6	106274	KALTENBOCK Natalie	CAN	0:54.83	0:52.32	1:47.15	19.70
10	8	106351	EMPEY Jennifer	CAN	0:55.80	0:51.36	1:47.16	19.76
11	16	106494	CREED Joanna	CAN	0:55.71	0:52.74	1:48.45	26.98
12	22	106138	CHAPMAN Christina	CAN	0:56.50	0:52.66	1:49.16	30.95
13	3	106353	FORAND Julie	CAN	0:55.90	0:53.40	1:49.30	31.73
14	31	106320	COLLIVER Jennifer	CAN	0:57.41	0:52.49	1:49.90	35.09
15	27	106321	DANSON Emily	CAN	0:56.58	0:53.76	1:50.34	37.55

26-02-2000/CRAIGLEITH SKI CLUB CANS710.580 SF8 / 1

ALGE TIMING
MEASURES

Pg. 1

POS	BIB NO.	CODE NO.	COMPETITOR SURNAME, NAME	NAT	TIME 1ST RUN	TIME 2ND RUN	TOTAL TIME	RACE POINTS
16	35	106322	MACNAUGHTON Amanda	CAN	0:57.90	0:53.69	1:51.59	44.55
17	21	106380	NEWMARCH Andrea	CAN	0:57.55	0:55.14	1:52.69	50.71
18	36	106491	BLACKETT Hilary	CAN	0:58.08	0:55.13	1:53.21	53.62
19	26	106475	MONTIS Jennifer	CAN	0:58.28	0:55.76	1:54.04	58.26
20	55	106498	SORICCHETTI Nicole	CAN	0:59.99	0:54.35	1:54.34	59.94
21	47	106453	JAMES Stephanie	CAN	0:59.84	0:55.37	1:55.21	64.81
22	39	106325	ADAMSON Elizabeth	CAN	1:00.33	0:54.90	1:55.23	64.92
23	60	106392	ROSENFELD Joanna	CAN	0:59.71	0:55.55	1:55.26	65.09
24	40	106265	DONALDSON Sarah	CAN	0:59.44	0:55.89	1:55.33	65.48
25	61	106448	GOODMAN Fiona	CAN	1:00.96	0:55.23	1:56.19	70.30
26	42	106454	JENSEN Inger	CAN	1:00.63	0:56.62	1:57.25	76.23
27	25	106346	DEBOU Lindsay	CAN	0:59.68	0:57.71	1:57.39	77.01
28	44	106328	BENEDICT Stephanie	CAN	1:01.08	0:56.50	1:57.58	78.08
29	48	106305	LITTLE Jessica	CAN	1:00.71	0:57.02	1:57.73	78.92
30	30	106502	TOWPICH Kim	CAN	1:03.88	0:54.78	1:58.66	84.12
31	19	106387	PRIOR Ashleigh	CAN	1:00.88	0:58.40	1:59.28	87.59
32	9	106402	VANDERBEEK Kelly	CAN	1:06.39	0:53.26H	1:59.64	89.61
33	50	106400	TILLEY Sarah	CAN	1:02.31	0:57.69	2:00.00	91.62
34	45	106331	BILOSKI Erin	CAN	1:02.55	0:57.97	2:00.52	94.53
35	5	105738	FERGUSON Linsey	CAN	1:04.03	0:57.15	2:01.18	98.22
36	68	106520	MURPHY Dawn	CAN	1:02.65	0:58.83	2:01.48	99.90
37	56	105842	GIBSON Lindsay	CAN	1:02.56	0:59.18	2:01.74	101.36
38	54	106469	MAGEE Elizabeth	CAN	1:04.74	0:59.02	2:03.76	112.66
39	52	106493	CREED Jenny	CAN	1:04.80	1:00.40	2:05.20	120.72
40	63	106359	GEORGE Alanna	CAN	1:04.77	1:00.54	2:05.31	121.34
41	66	106519	KHUTYKA Renee	CAN	1:05.06	1:00.77H	2:05.83	124.25
42	23	106456	KENNEDY Lillie	CAN	1:11.11	0:56.76	2:07.87	135.67

DID NOT START (1ST RUN)

14 106130 PRASER Fairlie CAN

DID NOT FINISH (1ST RUN)

10 106148 MAC NAUGHTON Carrie CAN
13 106386 PATTILLO Maggie CAN
17 106122 DEBRUYN Margaret CAN
32 106276 MACDONALD Whitney CAN
33 106361 GRUEN Gillian CAN
34 106467 LUSH Marie CAN
38 106171 VANDERBEEK Laura CAN
43 106126 EAGLESON Lindsay CAN
46 106307 LAURNUMBERG Tiia CAN
49 106437 DAKERS Jessica CAN
51 106350 DYSON Paige CAN

26-02-2000/CRAIGLEITH SKI CLUB CANS710.580 SF8 / 2

ALGE TIMING
MEASURES

Pg. 2

POS	BIB NO.	CODE NO.	COMPETITOR SURNAME, NAME	NAT	TIME 1ST RUN	TIME 2ND RUN	TOTAL TIME	RACE POINTS
53	106409	LARKIN Kelly	CAN					
64	536927	FERRI Andrea L	USA					
67	106505	VOGRIN Caylee	CAN					

DISQUALIFIED (1ST RUN) 0

DID NOT START (2ND RUN) 0

DID NOT FINISH (2ND RUN)

12 106176 WRIGHT Carolyn CAN
24 106355 PRASTACEY Alexandra CAN
37 106296 SIMPSON Bryony CAN
29 106357 GAUDET Lindsey CAN
28 105942 FLYNN Erin CAN
41 106417 DELAROSSEL Kelsey CAN
57 106450 HEDICAN Krista CAN
65 106422 PRASERES Laura CAN
62 106504 VENABLES Christina CAN
58 106481 PETRELLA Vaylen CAN

DISQUALIFIED (2ND RUN) GATE:

59 106426 COXON Francine CAN 1

26-02-2000/CRAIGLEITH SKI CLUB CANS710.580 SF8 / 3

ALGE TIMING
MEASURES

Pg. 3



Results

Race results with penalty calculation are submitted on-line by uploading .xml files in the prescribed formats. The files are emailed to alpineresults@fisski.ch. Files are to be named in the following format:

CANcodex_TD#.xml CAN1383_1018.xml

note: race codex must be 4 digits e.g. 0567 not 567.

The subject line for uploading emails should be "Results CANcodex.TD # e.g. Results CAN1383.1018

.com not .ch

TTRs are submitted on-line by uploading .xml files in the prescribed formats to alpineresults@fisski.com. The TTR software has an email facility built in. Copies should be sent to the RA, the TD and the Canada FIS TD Commissioner at the same.

yearALcodexTR.xml 2017AL1383TR.xml

The TD Report is prepared and submitted on-line by the FIS TD using his/her secure FIS portal. The TD is to send a copy to the Race Administrator for record keeping.

Hardcopy and scanned copies of all reports are to be retained by the Race Administration for 1 year. In addition to the results, penalty, TTR and TD Report, retained records include all minutes, 1st Run Start Lists, Referee Reports, Accident Reports, supplementary reports and timing strips.



More Case Studies

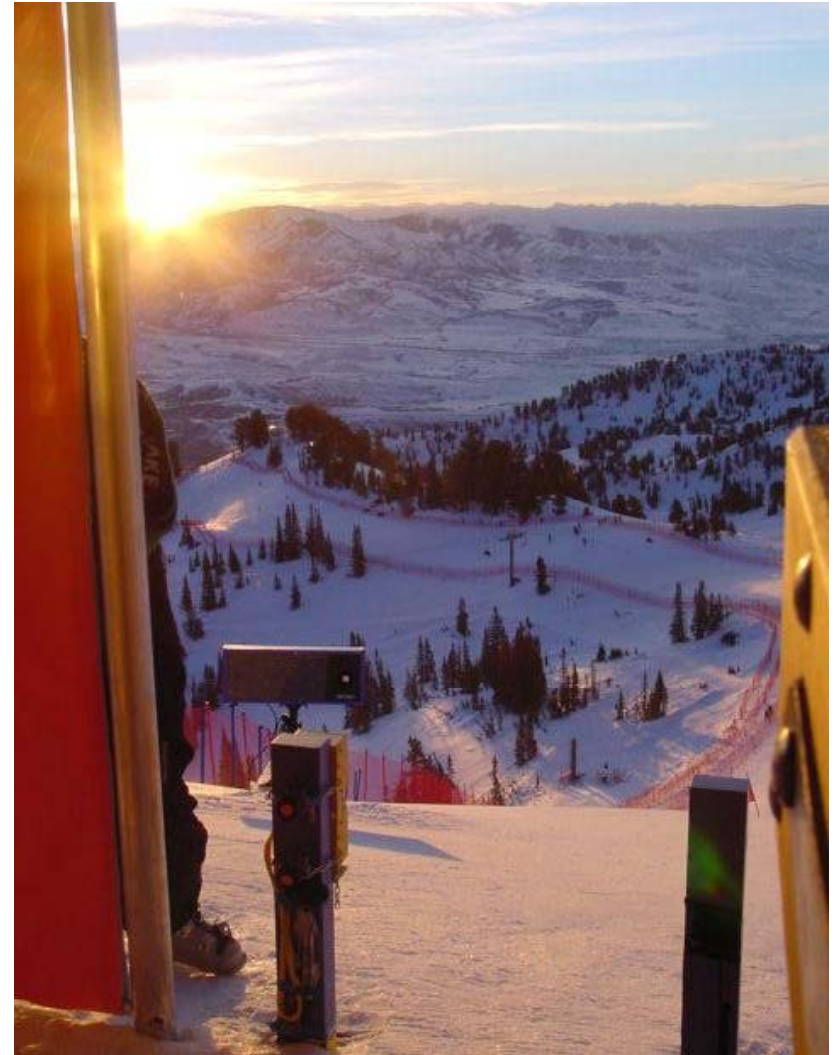


Teamwork



Thank you

- *Thank you to the countless volunteers and Officials that make ski racing in Canada what it is today.*
- *Your dedication is appreciated both in the classroom and on the hill.*





ALPINE CANADA